

Wishing our readers
a MERRY CHRISTMAS
and a HAPPY NEW YEAR

The Prattler



theprattler.org.nz

prideinputaruru.com

Pride in Putaruru Community Newspaper
Incorporating Arapuni, Tirau and associated Rural Communities...

DECEMBER 2020

Issue 156

INSIDE THIS ISSUE

- Public Waterpark Survey Responses
- Obituary: Anne Edmeades
- School, Club and Puzzle Pages
- Road improvements in Tirau Street
- Waikato Arts Navigator



PRIDE IN PUTARURU CHRISTMAS PARADE



THE PRIDE IN PUTARURU CHRISTMAS PARADE

It was a fine evening for the 2020 Pride in Putaruru Christmas Parade although rain threatened at one stage. A very large crowd turned out and took vantage points along the parade route from Glenshea Park to Princes Street and return.

Parade commentary was provided by Johnny Dryden of Cruise FM.

Lucky winners from the Honda Shop colouring competition rode with Santa during the parade.

The Cambridge Brass Band played before and during the parade and entertaining at the park were Anderson Boys, Brett Bolt and local performers.

Glenshea Park took on a family picnic atmosphere that saw the largest crowd ever relax after the parade. PiP Prize giving and lucky draws were made at park at the conclusion of the Parade.

It was a tribute to local businesses, schools and groups that over 20 floats participated in the Float Parade along with vintage cars and vehicles, walkers and decorated bikes. Building a float is a very much appreciated community support declaration.

Leading the parade were the Putaruru Police, Fire and Ambulance services who are a well respected part of our local Putaruru community.

The mystery judges had difficult decisions to make. There was also a popular vote award collected from the public on the night.

The Category winners for the Christmas Parade this year were:

YOUTH

- 1st Owlets Forest Early Learning Centre
- 2nd Tirau Primary School
- 3rd Kids Rock Early Learning Centre

COMMERCIAL

- 1st Van Dyk Furnishers Ltd
- 2nd Putaruru Library
- 3rd Cardrona's Classics

SERVICE

- 1st Shining Light on the Dark
- 2nd St Paul's Church
- 3rd The Plaza Theatre

PEOPLE'S CHOICE

- Kids Rock Early Learning Centre

OVERALL WINNER

- Owlets Forest Early Learning Centre

Prattler photographs taken during the parade appear on pages 2, 25, 30, and 31 of this edition.



Supporting Your Community

FLOORINGXTRA

BEDSRUS

100%

bikebarn
GROW YOUR ADVENTURE

07 883 7309

www.vandyks.co.nz

Putaruru

**YOUTH SECTION: First** Owlets Forest Early Learning Centre.**YOUTH SECTION: Second** Tirau Primary School.**YOUTH SECTION: Third** Kid's Rock Early Learning Centre.**SERVICE SECTION: First** Shining Light on the Dark.**SERVICE SECTION: Third** The Plaza Theatre.**COMMERCIAL SECTION: First** Van Dyk Furnishers Ltd.**COMMERCIAL SECTION: Second** Putaruru Library.**COMMERCIAL SECTION: Third** Cardrona Classics.**SERVICE SECTION: Second** St Paul's Church.**FACE PAINTING** at Glenshea Park.



CHRISTMAS SALE

50% OFF

All Sleepyhead Chiropractic

PLUS INTEREST FREE 'TIL 2023*

on in-store purchases \$999 & over 'til 25.12.2020



Now from

\$1899

Chiropractic Prime

Queen Size Mattress & Base



Now from

\$2549

Chiropractic HD

Queen Size Mattress & Base



Dream Price

\$1599

Chiropractic Pop Up

King Single with Trundler



Now

\$3799

Chiropractic HDX

Queen Size Mattress & Base



Sleepyhead
CHIROPRACTIC HDX



Proudly Local



Comfort Guarantee



Warranty



Shop Safe

BedsRus Store Name VISIT Street Address
TALK Phone Number DREAM bedsrus.co.nz



BedsRus

*Offer valid to 25.12.20 or while stocks last. Discount offers apply to selected beds and bedding only, prices as marked. Offers exclude Everyday Dream prices, run outs, clearance stock (unless otherwise stated) and not to be used in conjunction with any other offer. See in-store for details. We reserve the right to correct errors or misprints. 30 day Comfort Guarantee Ts and Cs apply.
*Interest Free 'til 2023 (25 Months Interest Free) is available on in-store Q Card and Q Mastercard® Flexi Payment Plans & Purchases \$999 & over until 25.12.20. Offer excludes Everyday Dream Prices, run outs, clearance, layby and not to be used in conjunction with any other offer. Lending criteria, \$50 Annual Account Fee, New Cardholder fee – \$55 Establishment or Existing Cardholder fee – \$35 Advance Fee applicable, terms and conditions apply. Minimum payments of 3% of the monthly closing balance or \$10 (whichever is greater) are required throughout interest free period. Paying only the minimum monthly payments will not fully repay the loan before the end of the interest free period. Standard Interest Rate, currently 25.99% p.a., applies to any outstanding balance at end of Interest Free period. Rate and fees correct as at date of publication, subject to change. Mastercard is a registered trademark and the circles design is a trademark of Mastercard International Incorporated. See in-store for full details.

MESSAGE FROM THE MAYOR



SWDC Mayor Jenny Shattock.

2020 has certainly been a massive year! In all my 19 years on Council, this past year has been the most unusual.

Without doubt the biggest impact on our community - and Council, has been the COVID-19 pandemic. New buzz words like lockdown, bubbles and alert levels became everyday language. Hand washing, social distancing and contact tracing became the norm.

The impact of COVID-19 on our businesses and our community is huge. As a community we did what we always do, we stepped up, we teamed up, we stood together. The impact of the pandemic will be felt for many years to come. Council is working through this recovery hand in hand with our community, partners, stakeholders, businesses and other Government agencies.

Amid the complexities of COVID-19, Council had a big year too. Reflecting on our highlights made me proud of what we have achieved together, especially given the unusual times.

Highlights:

- Improved relationships with community, partners and stakeholders to further collaboration.
- Developed community Concept Plans for Arapuni, Tokoroa and Tīrau alongside our community. These complement the Putāruru Concept Plan developed by Pride in Putāruru and Putāruru Moving Forward last year.
- Delivered a zero percent rate revenue increase for our community.
- Progressed Putāruru re-zoning for growth. New development is already showing signs of progress with a number of off-plan sales already underway through developers.
- Launched the Space to Grow initiative to encourage business and economic growth.
- Initiated the Business Collective in Putāruru and provided a space in Princes Street for local businesses to sell produce.
- Participated in community events such as Matariki and Festival of Cultures.
- Improved sector partnerships such as forestry, community and education.
- Started the \$30 million wastewater upgrade project, with the construction of the Digester in Tokoroa. Other components of this project include wetlands in Tīrau, Tokoroa and Putāruru; along with plant and sludge upgrades in Putāruru and Tokoroa. This project is one of our largest ever and will be implemented over several decades. The recent Water Reform funding has provided some funding towards this project.
- Added new playgrounds and other leisure facilities, including opening the Tīrau Domain.
- Working alongside Pride in Putāruru, we made progress on the existing Waterpark area in Putāruru with the new Matariki-based development.
- Partnered with others to secure significant central Government funding for projects in our community.
- Encouraged our people to support local businesses through the Spend Local campaign.
- Received awesome positive district news coverage in mainstream media, TV and a range of sector magazines.
- Moved Council's loan funding to the Local Government Funding Agency to secure loans at reduced levels.

A list of highlights wouldn't be complete without mentioning our fantastic community groups and individuals that provided support to our people during COVID-19. My sincere thanks to all our community heroes.

Lowlights are hard to focus on, but the lowlights often bring learning for the future and I am pleased that we rose to the challenges and despite all, still had a good year.

Our challenges were:

- COVID-19 and the ongoing economic impacts on our businesses and community.
- COVID-19 related deaths that have touched our community.
- No ANZAC Day.
- Delays on the Tokoroa CBD project.
- Lengthy SH1 works.
- Poor behaviour around recycling and illegal dumping.

I want to end off by wishing everyone a wonderful and peaceful summer holiday with whanau and friends.

Ma te rangimarie, ma te atawhai, me te whakapono, ka ora ai te hapori.

LIMBO: HOW LOW CAN YOU GO?

Decorators will be glad to learn that their Christmas tree orders are now being placed - no tree too big or too small.



PRATTLER MARCH 2021 PUBLICATION DEADLINE

5:00pm **Friday 19 February** for the **3 March** issue. Mark this in your diary now!

WOODSY ENGINEERING LTD

CHOOK SHEDS



- Built to last
- Customised modifications
- Animal Shelters also available

191 TIRAU STREET | PUTARURU | Phone (07) 883 8922
Mobile 027 344 9438 office@woodsyengineering.co.nz

Bible Baptist Church

77 Princes St, Putaruru

Services are held every Sunday at 2pm

The world is looking for acceptance and hope. We accept people where they are and allow the Word of God to change them. While you won't find a judgemental spirit here, you will find people that still believe in the power of God's Word to change lives. Our services begin with old-fashioned hymns preparing our hearts for the main focus, which is the preaching of God's Word. A strong family atmosphere unites us as the family of God and provides strength and encouragement through fellowship.



www.rotoruaiblebaptist.co.nz

An extension ministry of Rotorua Bible Baptist Church

We are an independent non-charismatic church

Tirau Primary School

Principal: Siobhan Patterson 69 Main Road, Tirau 3410 Ph: 07 883 1653



Term 4 has been full with many events. Ag Day took place in the first week, followed by our school production, Tirau's Got Talent, and our Athletics Events. Many of our competitors went to Interschool Athletics, unfortunately the weather let us down on both Athletics's days, but we still managed to get some events in and were able to see some fantastic effort by our students.

Thank you to our school community for their support over what has been a challenging year for all. Happy Holidays, and see you in 2021.



Tirau's Got Talent 2020



CHRISTMAS DECORATIONS: GRAHAM BROWN & CO

Every office and space inside Graham Brown and Co was extensively decorated for the Christmas season, 2020. The whole building interior was a delight to behold.



**LePine
& CO.**
Est. 1953

JENNIE BURNEY

**YOUR
LOCAL
LEGAL
EXPERT**

Le Pine & Co. Your local legal team, offering expertise from offices in Putaruru, Taupo, & Turangi with access to the expertise of 48 firms in the NZ Law network.

- Rural & Residential Conveyancing
- Commercial Conveyancing
- Enduring Powers of Attorney & Wills
- Trusts



Call us today to discuss your requirements.
Ph: 07 883 8096 16 Princes St, Putaruru
www.lepine.co.nz



PLAZA THEATRE

We have the following events coming in January and February...

Wednesday 7 January 2pm

SCHOOL HOLIDAY MOVIE **Home Alone** (1990) Tickets \$5 Students & \$8 Adults
"Eight-year-old Kevin is accidentally left behind when his family leaves for France. At first, he is happy to be in charge, but when thieves try to break into his home, he tries to put up a fight."

Sunday 31 January 2pm

SUNDAY MOVIE **Radioactive** (2019) Tickets \$5 Students & \$8 Adults
"After the death of her beloved husband, Marie Curie's commitment to science remains strong as she tries to explain previously unknown radioactive elements. But it soon becomes terrifyingly evident that her work could lead to applications in medicine that could save thousands of lives - or applications in warfare that could destroy them by the billions."

Saturday 13 February 7pm

ARTS ON TOUR NZ **Gypsy Jazz Duo** with Fiona Pears and Connor Hartley-Hall
Tickets \$15 each.



Sunday 8 February 2pm

SUNDAY MOVIE **Hope Gap** (2019) Tickets \$5 Students & \$8 Adults
"Grace lives an idyllic life in a British seaside town, but her world soon comes crashing down when her husband of 29 years tells her he's leaving her for another woman. Through stages of shock, disbelief and anger - and with support from her son - Grace ultimately regains her footing while learning it's never too late to be happy."

LOUISE UPSTON: MP FOR TAUPO



Taupo MP Louise Upston.

It's hard to believe that Christmas is yet again upon us, it feels like not so long ago that we celebrated the start of 2020. Who was to know what the year would have in store for us then!

With COVID, an election, several adverse weather events all in one year, this year was bound to be extreme. The beginning of the year was full of flurry and activities and then suddenly it wasn't. Things that we planned for were either cancelled, postponed or rearranged and it almost seemed that the year would go forever and ever.

But I'm so pleased that the people of South Waikato pulled through. I recently attended the Messy Church in Putaruru and it was great to see so many people come together. I've been blown away by how strong our local community has been in the face of adversity.

Each year at this time I start planning for the next. I plan because, not only do things work better when one has a plan, with certainty also comes a degree of comfort and a sense of accomplishment. One of my lessons this year was the reminder that nothing is ever certain and agility is a valuable commodity.

However, that does not mean we need to stop setting goals.

One of my goals for South Waikato is to ensure that schools get the building and infrastructure upgrades that they deserve.

At the same time, the Minister for Transport needs to step up and ensure timely upgrading of the State Highway so that it is fit for purpose and made safer.

Other goals for the new year include continuing my advocacy for midwifery and maternity services through our DHBs to be adequately funded so that mums and their babies get the world-class maternity care they too deserve.

South Waikato is a growing region and I'll be keeping a close eye on town upgrade activity for Putaruru as a thriving community depends on a thriving town and business hub. I know the work is a temporary disruption but it will be worth it.

Finally, while 2020 has been a test, it has made us even stronger. It's time to press that reset button for a fresh new year with fresh new opportunities.

Put up that tree, plan that holiday with family, go to that festival. Because we deserve it!

My offices will be closed for the annual parliamentary shut down between 24 December 2020 and 6 January 2021, however, in the event of an emergency, you can reach me by email upston.sthwaikato@parliament.govt.nz or call 07 886 5554.

You can also follow me on Facebook and Instagram or sign up to my newsletter at www.louiseupston.co.nz to stay in touch.

From my family to yours, a very merry Christmas and a happy new year.

DIWALI CELEBRATED

The Putaruru Public Bar and the Crown & Anchor Bar sponsored a Diwali event for the Putaruru community children aged 3 to 13 years. Diwali activities were set out and the children tasted ice cream, milo and Indian sweets and everyone enjoyed the colouring, Henna and Rangoli activities.



Your vision our expertise.

Your Local Licensed Building Practitioner
Specialising in:

New Builds
Renovations
Alterations
Light Commercial

Contact Trardyn to discuss your next building project.



follow us on:



@lunnbuilders

Trardyn Lunn [P] 021 805 879 [E] lunnbuilders@gmail.com

WAIKATO ARTS NAVIGATOR

The Waikato Arts Navigator (WAN) has been developed as a framework by Creative Waikato, available to all Councils in the Waikato region in recognition of the essential role that the creative arts play in our communities. It's goal is to build a collective vision for arts and creative outcomes for all communities.

The creative arts bring people together, build links between communities, and encourage pride and a sense of belonging. A creative economy is also vital for its role in social and economic health and regeneration, plus the health of the arts sector is a critical indicator of overall community wellbeing.

Art and culture is central to community cohesion and to our sense of identity of place. The arts play a key role in promoting social and economic goals through local regeneration, attracting tourists, development of talent and innovations and improving wellbeing. Art thinks about the world in its current state and it can re-imagine the world as it could be.

The ultimate objective of WAN is to have all Councils in the region making decisions for arts development with the following outcomes in mind:

Creative PROSPERITY: A strong creative economy that is vibrant, attracts people and strengthens the perception of the Waikato.

Creative EXPERIENCES: An engaged community who values and participates in artistic and cultural expression.

Creative WELLBEING: Create and strengthen communities, enhance mental and physical health, and develop a sense of identity through arts and culture.

Creative EXCELLENCE: Celebrate our arts and culture through a culture of achievement with national and international recognition.

The foundation principles of WAN are that it is:

- strength based
- borderless
- inclusive
- tangata whenua
- regionally aligned



When arts and culture are strong and visible, so are communities.

This table presents the *challenges*, *opportunities* and *outcomes* of the WAN.

CHALLENGES	ARTS RESPONSE	WAN OUTCOMES
Empty buildings and shops	• temporary activations fostering long-term community outcomes	<ul style="list-style-type: none"> • creative economies • attract new residents • retain youth • national perceptions • community participation • community and cultural expression • recreation and interaction • local pride • community engagement
Potential loss or re-invention of identity	<ul style="list-style-type: none"> • arts as a tool to preserve recover or recreate a new identity • opportunity to increase the quality livelihood and sustainability of the urban environment through playful experiences • creatively moving into the future 	<ul style="list-style-type: none"> • community participation • community and cultural expression • recreation and interaction • local pride • community engagement • collective and individual identity
Tourism downturn	<ul style="list-style-type: none"> • making places more memorable fun participatory surprising equitable and social • highlighting local businesses and telling their stories 	<ul style="list-style-type: none"> • creative economies • attract new residents • retain youth • national perceptions • community participation • local pride • create grow and strengthen communities
Physical and mental health	<ul style="list-style-type: none"> • engaging people and sharing their own experiences and visions • telling peoples' stories from their perspective • helping people to stay connected express their identity and understand differences 	<ul style="list-style-type: none"> • mental and physical health • community engagement • collective and individual identity • create grow and strengthen communities
Inequalities between rich and poor are intensified	<ul style="list-style-type: none"> • bring together diverse communities to create positive change • create awareness and redress issues that were already embedded • highlight the human impact into the national conversation about economic inequality infrastructure development and the future of cities and towns 	<ul style="list-style-type: none"> • community participation • community and cultural expression • mental and physical health • community engagement • collective and individual identity • create grow and strengthen communities

Councils and communities are able through WAN to:

- clearly see their communities within the plan
- agree with the priorities and understand how they can benefit their communities
- identify elements within the plan that they can support or action - contributing to the vision
- recognise the importance of relationship between stakeholders and other communities in order for the vision to be realised

Global catastrophes change the world. The impact of Covid has amplified challenges that already existed such as social inequality, mental health and economic fragility.

Arts and cultural activities serve as a coping mechanism for humanity. They help us to adjust to new conditions. They help us find clarity around who we are and how we connect.

Because of this we are seeing creativity on a level never before seen in human history during Covid. An appetite for culture was shown around the world.

Online concerts virtual galleries and musical performances not only provided entertainment and cultural uplift but served to remind us of our humanity.

What is needed now is to translate this into a broader understanding of the concept of value for the arts in the wider community.

The arts can be a powerful force to help create more equality in how we respond in time of difficulty. It values human impact and an ecosystem that is adaptive, resilient and embraces the collective rather than competitive behaviour.

CHRISTMAS CHURCH SERVICES

The Putaruru Ministers Association would like to invite you to one of the following Christmas Services. Times are:

St Aidan's Presbyterian Church Overdale Road

20 December 10am Carol Service

Christmas Day 9:30am Family Service

St Paul's Co-Operating Church Kensington Street

5 December 4pm Messy Church Christmas

13 December 8pm Nine Lessons and Carols

21 December 1:00pm Ballymena/Music and More Christmas Service

24 December 9:30pm Christmas Eve Service at St Paul's

25 December 9:30am Christmas Day Service at St Aidan's

27 December 10:00am Service at St Aidan's

From 27 December until 7 February **St Aidan's** and **St Paul's** combine with the services at **St Aidan's**, Overdale Street, at 10:00am each Sunday

Putaruru Gospel Chapel Kensington Street

20 December 10:30am Christmas Service

Living Springs AOG Church Tirau Street

Services on 20 & 27 December

Putaruru Baptist Church

13 December 10:30am Thanksgiving and children's Christmas play

THE PUTARURU ROTARY EDUCATION TRUST SCHOLARSHIPS

The Putaruru Rotary Education Trust invites applications for scholarships for study in the year 2021. This is open to all students residing within the catchment area for Putaruru College who will be attending any tertiary training in NZ.

Applications close 15 January 2021.

Interviews will be held soon after.

Further information, including criteria for the scholarships and application forms can be obtained from:

Secretary/Treasurer Jasmine van der Heyden

Email: jasminevdh@grahambrown.co.nz

Completed applications and CVs should be posted to:

Rotary Putaruru (Education Trust)

PO BOX 76

Putaruru 3443



Nicholson PH: 07 883 3198
FAX: 07 883 3192
MOB: 0274 480 698
43 ARAPUNI STREET
PUTARURU
EMAIL: nich.sur@xtra.co.nz

Spargo Plumbing Ltd
33 Buckland Street, Box 42, Putaruru
Lindsey Robbins
Ph: 07 883 8504
Mob: 0274 459 116
admin@spargoplumbing.co.nz

Stuart Edmeades
Livestock Representative
07 883 7213
027 440 9899
stuedmeades@gmail.com
SILVER FERN FARMS



Putaruru Primary School

**Excellence
Citizenship
Life-Long Learner**

WHODUNNIT



Our Senior Production was another great hit this year and we acknowledge all the hard work Mrs Lynne Richards puts in to writing, directing and sorting out costumes for all the participants. As usual the show was well supported and we had almost a full house on both night performances - thank you to all the parents/whanau who came along to see your children in the show.



ATHLETICS DAY

We were very lucky with the weather for our Athletics Day this year, unfortunately the Interschool Athletics was cancelled on the day because of rain.



WHAT'S UP?

- The positive feedback from the Waterpark submissions - see these detailed on pages 10 and 11 of this Prattler.
- The pop up shop Māketē Mahi Toi, Putāruru.



- All those who contributed to the Christmas Parade and family entertainment at Glenshea Park.



WHAT'S DOWN?

- Privet trees in neighbouring gardens - please chop these down as the health issues they cause are not pleasant.



- Music played loudly by boom-boxes - their tone subtlety is zero.



The Plaza offers all of the services required for an event, from catering and ticketing, to arranging advertising and equipment hire.

Hire charges start at just \$60, and vary according to what areas you would like to hire, and what type of event you are staging.

There are concession rates available for community groups and long-term bookings.

Call us – you'll be surprised at what we offer!

07 883 8596

027 655 9715



theplaza@plaza.org.nz

THE SHOP AND WIN IN PUTARURU PROMOTION

The *Shop and Win* in Putaruru promotion was designed by Linda Gailbraith from Pride in Putaruru. It began 23 November and closes 20 December 2020. Draws will continue weekly until the close of the promotion.



Kathryn Davies, (Putaruru Police), makes the first draw while Linda Galbraith from PiP looks on...

For the duration of the Promotional Period, customers shopping at participating Putaruru businesses will receive one entry into the prize draws when they make a qualifying purchase of \$20 or more, write their name and phone number on the back of the till receipt and place their entry into the entry box in-store or at the Pride in Putaruru office.

There are forty prizes of \$50 Putaruru vouchers each to be won plus one Grand Prize of \$1000 Putaruru vouchers and two prizes of \$250 Putaruru vouchers. The total value of all prizes is \$3500.

The winners will be determined by a draw, held in police presence, from all valid entries at the end of each week of the Promotion Period plus a Grand Prize draw at the end of the final week. Each week the first ten eligible entries are randomly drawn from all entries received by weeks end during the Promotional Period.

Undrawn entries will be included in the subsequent weekly draws, with ALL eligible entries included in the Grand Prize draw. The remaining draw is: Week 4: 14 - 20 December drawn on 22 December.

There will be:

- 10 prizes each of \$50 Putaruru vouchers
- 2 prizes each of \$250 Putaruru vouchers
- One Grand Prize of \$1000 Putaruru vouchers

Winners will be notified by telephone using the details written on the entry. It is up to entrants to ensure that their contact number is correct and written clearly.

The prizes of \$50 worth of Putaruru vouchers and the Grand Prizes of \$1000 and \$250 worth of Putaruru vouchers must be used at participating Putaruru businesses before 31 March 2021.

These are samples of the vouchers that were designed by Linda Gailbraith for the shop in Putaruru promotion.

BUSINESSES WHO ASSISTED WITH THE PiP SHOP & WIN PROMOTION

Moo's, Baa's, & Oink's
Bev's Delights
Bella Pane - Quality artisan bread and pastry
The Cook
Putaruru Electrical
Great Flavours of INDIA Restaurant & Bar
PAWS - Pet Animal Welfare Shops
Nanas Toybox & Gifts
The Cow Cafe
Pretty Digits
Planet Computers Putaruru
Putaruru Mini Mart
Putaruru Art's & Craft's Co-op
Fresh Start

Putaruru Florist
AJ's Tyre Sales & Service
Unichem Putaruru
Over the Moon Dairy Company
Kaycee's Hair Design
Body Ease Waikato
Van Dyks
The Wooden Farmer
Nana Lou's Cafe
Steinies Hair Masters
Vetora Putaruru
Māketē mahi toi, Putāruru
Styles on Main
Opportunity Shop



PRIDE IN PUTARURU REPORT

Over the past few months Pride in Putaruru has spent many hours reviewing our structure and planning our way forward after what has been a difficult year for many in our town, throughout our country and world wide.

While the role of Pride in Putaruru has not changed hugely it now includes a focus group to concentrate on promoting business, attracting new business and working with SWIF and SWDC to generally support development in our town. We are also supporting the development of youth activities and discussions with sporting groups in Putaruru.

The current committee are a forward looking team, very positive and enthusiastic and look to embrace all that 2021 may bring our way. We are well aware of the pressure on our businesses this year and are very appreciative of the feedback regarding our *Shop and Win* promotion. It is great to hear how many people, both businesses and shoppers are supporting this campaign. Thank you to those who are participating, congratulations to winners to date and we look forward to announcing the big winner on 22 December.

We are very pleased to see the numbers visiting the Information Centre and PIP office, post covid, increasing. Currently we are in the process of appointing a Putaruru Business and Community Liaison Officer who will begin work next year and among their first tasks will be establishing contact with our business community and joining with us to continue planning for our Water and Food Festival. Already the plans for it on 27 February are underway, entertainment and stalls are booked and we are sure it will be a great success.

Putaruru continues to have new businesses opening but sadly we also have those that close. We are still very keen to see the old Honda shop building developed and open. This is a key part of our concept plan which following a review, early in 2021 will continue to form a basis for our work next year. Stage 1 of the Waterpark development is again delayed and is scheduled for April commencement. We will continue working with council to progress Putaruru's skate park and basket ball court plans. Community consultation will be a part of this.



On behalf of our current committee I want to thank those who have given so much of their time and energy over years and laid a good foundation for us to build on. Equally I want to thank our new team who are working hard at the moment. They bring a real variety of skills and experiences and are a super group to work alongside.

The Prattler continues to stand out as a local paper and thank you to the Editor and to our new delivery team. I also want to acknowledge the support of Graham Brown & Co staff, especially over the last few months as we set up new systems.

Putaruru is well recognised as a caring community and I hope this is a festive season where everyone keeps safe and takes care of those around them as well as looking after our environment and those that visit it over the holiday period.

I know many in our community are ready for a break and I hope your holiday season is refreshing and energising.

Pride in Putaruru wish you all a Merry Christmas and a Happy New Year.

Raewyn Whiteman-Thorne [Chairperson: Pride In Putaruru]

PUTARURU WATER AND FOOD FESTIVAL

Saturday 27 February 2021

This bigger and brighter day is being planned right now.

Community groups, Businesses and Families, mark this date in you 2021 calendar now!

PRATTLER MARCH 2021 PUBLICATION DEADLINE

5:00pm **Friday 19 February** for the **3 March** issue. Mark this in your diary now!

QUICK TIP TO FIND PiP TV

Type **pip putaruru** into the YouTube search box then click **SUBSCRIBE**



theprattler.org.nz

WATERPARK: FEEDBACK FROM THE SWDC SURVEY

The South Waikato District Council, Pride in Putaruru and Putaruru Moving Forward ran public consultation meetings on the redevelopment of the Putaruru Waterpark at the Plaza Theatre on Monday 14 September in the evening and 2 daytime sessions on Wednesday 16 September. A video of these sessions was placed on PiP TV.

At the South Waikato District Council public Community and assets Committee Meeting on 12 November, Walter Williams, Project Manager, presented his report on the results of the Waterpark community engagement, a summary of which follows.

Respondents to the South Waikato District Council water park survey were unanimously positive about the central theme, (Matariki and how this relates to the district's water), with 100% positive/affirmative feedback.

The overall response rate was low - a total of 14 feedback forms were received, however, this can also be seen as positive because there was no negative feedback.

85% of respondents agreed with the Ranginui/Matariki design and the commentary from those who didn't agree was that Raukawa should be consulted on what this sculpture should be.

There was little commonality in feedback for the Papatuanuku design, except that it should also be jointly designed with Raukawa. This leaves development possibilities for this feature fairly open.

Community opinion on whether or not Council should fund Stage 2 was split, with just under half of respondents stating Council should find the budget to complete the project and not rely on grants, particularly "in the current climate."

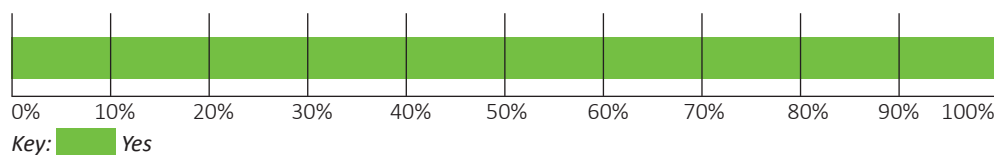
The theme of incorporating many streams and rivers, (not focusing just on the Waihou) was well received, with recognition for all the named awa. In order to proceed, Council will consult with Raukawa to ensure all the significant awa are recognised in the watercourse.

The inclusion of actual (running) water in the park was taken for granted during the engagement sessions.

Much additional feedback was received on various aspects of the development with varying themes and points being made.

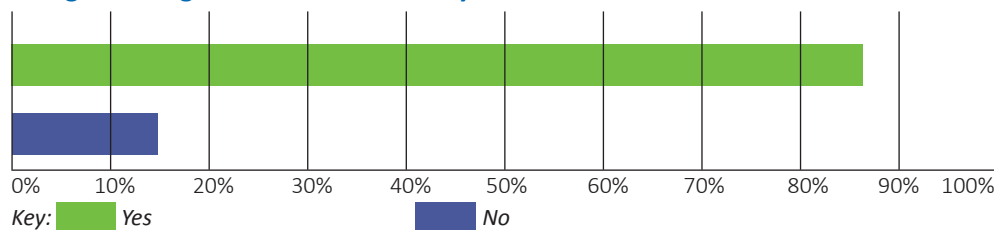
Community feedback.

Do you feel the theme represents Putaruru's culture and relationship with the natural environment?



- water is really important to all of the activities that occur both in foundation business and in social activities
 - very interesting to hear Raukawa's story and very happy the tangata whenua are involved with this
 - the rivers and streams were here long before any people
 - strong connection with the land and sky (birth - life - after life)
 - at long last something is being done at the Waterpark that represents all groups/cultures in our community
 - it is inclusive of all people and trades
 - water is important to our town with beautiful springs and rivers - Matariki ties in perfectly and is something as New Zealanders we should all celebrate and learn about
 - I believe it could, culturally, environmentally and locally
 - yes it does represent the culture and the natural environment but in order to have a understanding of the concept theme Matariki you should be consistent in interacting and communicating with the tangata whenua in the community
- The meeting I attended on Monday night showed me there is lack of communication and knowledge regarding the history of Matariki with in the South Waikato District Council. If you are to present a theme you should be more involved with locals so get more info regarding not just Matariki but the meaning of all elements that connect to Matariki and the connection of the people.

Design of Ranginui and Matariki. Do you like it or not?



- Matariki covers all elements of the community
- I love the Ranginui
- the design should come from Raukawa and from their depiction of Rangi and Papa
- very topical and different from the usual run of the mill 'Town Themes'
- has a strong physical/cultural theme
- the design should be left up to Raukawa. Will PIP/PMF have the strength to give them the opportunity to do so? Really like the story of Matariki as it was explained by Raukawa.
- I like the idea but the tower used as an example does not really fit
- everyone can relate in some way to the stars

- be good to see something relating to Papatuanuku as well, seeing as a lot of our town works the land
- suits the Matariki kaupapa
- I like the design of Matariki but I don't like the design for Ranginui. My first impression of hearing an anchor in the local paper, I thought it was an actual anchor. The draft of it looks like a Easter egg, until someone mentioned it linked to the food court and it made sense.
- whatever the design of Ranginui may be I hope it stays as timber. That would signify our history of being a timber town. If it stays as a Matariki theme I would like to see the SWDC have the park at night with the stars of Matariki shining.

The Papatuanuku feature is depicted here as a rock. However we would like to create a feature that is just as eye-catching as the Ranginui feature. This could take the form of a sculpture, a piece of art sculpture that can be played on, or a series of stone carvings commissioned during a stone-carving symposium to be held in the Waterpark. What do you think?

It would be good to see a playable feature to complement the fountains and bubble jets, and may keep children away from the main water course. Why not have storyboards (get local businesses to sponsor them) that explain Matariki and the symbolism. What about coin operated fountains or bubble jets?

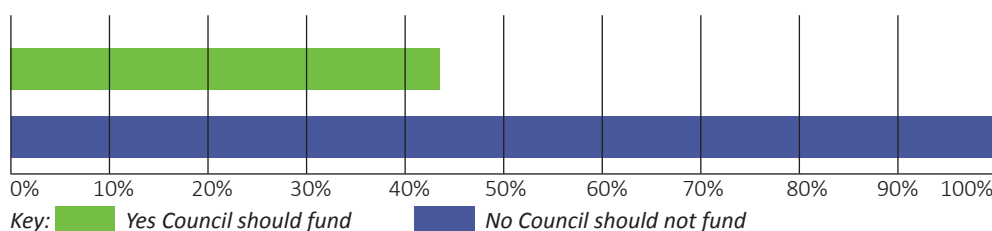
A sculpture symposium is my preference because then we have a community involvement, but I would still like to see young people learning to sculpt from others so that we have an infusion of old and new skills to evolve a style that represents our diversity. I would love a sculpture that can be sat on, played on and meditated on. Something fun but motherly.

- Raukawa should lead and advise what this feature needs to be
- work of art as suggested at presentation
- living events such as sculpture/art/music creation and links to nearby spaces - some play but don't see this as a major purpose.
- usually Ranginui and Papatuanuku are represented vertically, not horizontally - I guess the design was done by a Pakeha
- the sculpture provided in the PowerPoint presentation was a great image - similar to the movie *Moana*
- sounds good on paper, I wonder about the noise levels and if it were to take months it could be very hard for those who work nearby

Some thoughts also expressed:

Papatuanuku is more than just a rock, having more native shrubs more timber furniture or play steps would help signify Papatuanuku. If you were to have a rock we have local artists that we can utilize and may reduce cost. Will it be sustainable and not deteriorate over time and cost ratepayers or the council a lot of money in repairing or cleaning? Could schools, childcare and Kohanga in and around Putaruru help create art work that could portray Papatuanuku? Some sort of rock carving sounds great.

The current project budget will cover stage one only. PIP and PMF will seek additional funding through grants and sponsorship to progress with stage two. This could take some time. How would you feel about council considering funding stage two as part of the upcoming Long Term Plan (LTP)? This would make things happen faster.



Because we are expanding the Waterpark seems to cover more than just the Waihou, which streams do you feel should be named in the Waterpark? Many of a grew up around here playing and swimming and local streams and rivers catching fish and crawlies exploring the stream and riverbanks running alongside the palms of friends and family. These are the awa that are the treasures of this district. Some are obvious because they're so visible.



Abbey's Place Childcare Centre

Laying the foundation for
lifelong learning



- **Quality childcare**
- **Limited spaces available now**
- **Safe, nurturing educational environment**
- **Qualified, passionate teachers**
- **Lower ratios and small numbers**

30 FREE HOURS available for children 3 - 5 years
[Conditions Apply]

Special rate available for 0 - 3 year olds
Call in anytime and meet the new team...

1 Commerce Street | Putaruru Phone 07 883 3293

Which streams and springs do you think should be included and why? We are asking for stream names and stories if you're happy for your story to be shared please indicate.

Region	Percentage of Population Aged 15 Years and Over in the Workforce
Waihou	~18.5%
Oraka	~18.0%
Waimakariri	~17.5%
Waiomou	~14.5%
Waihiere	~13.5%
Waikato	~13.0%
Pokaiwhenua	~12.5%
Little Waipa	~12.0%
Opouaru	~11.5%
Waioraka	~11.0%
Otawaiema	~10.5%

• What about the nearby mountains, they must be mentioned too (because where does the water start flowing from)? We need to acknowledge where the rivers are born. Thank you for this opportunity to say a bit more. I fully understand that Stage one is going to be the main work focus for now, and there is a lot to accomplish, basic structural stuff, tidy up and landscaping. However it is really important that we get it right in the time scales allowed as this would provide the Council and subcontractors credibility in the community. I do feel we will need to get a hurry on with Stage 2 as people will not be happy to see a half baked pie! In the meantime we could perhaps have large display boards (perhaps even painted by locals) to show people what the concepts are and to invite further community engagement and ideas basically to tweak any obvious oversights. (I heard rumblings about how long the whole thing has taken so far and I think communication is key here). By now we are champing at the bit and wanting to get on with the changes. It's a shame that we live in a world where instant gratification seems so prevalent. On a personal note, as a healer I totally love the concept of the Ranginui feature at the south corner of the park - this welcomes people to our warm heart. I totally resonate with the concept of the Korowai and the Matariki. I can relate to this and at the meeting on Monday 14 September I finally made of connection, understanding and acceptance at the meeting on Monday. The Korowai feels like a symbol of feeling embraced and protection to me, something that is becoming close to our hearts in these uncertain times of Covid. Right now we need our world to feel in balance and we need to feel the warmth and breath of our mother and father figures as we seek leadership and wisdom. I know that I felt childlike and vulnerable at the beginning of Covid and memories of troubled times in faraway lands of Africa came flooding back, however if! Think of the Korowai it symbolises love and leadership. It also points out an obligation to care for the land and its people. And this is a job for all of us, not just the chosen few. Our Waterpark has to illustrate our closeness and guardianship of the land, we are protectors for the future. We are a new and very hybrid culture and we have to show respect for our land by keeping our roots in the soil as our eyes look to the future and our ears listen to the voices and calls of those around us. I know it's only a small Waterpark but I would very much urge that our nearest and dearest mountains are represented in the park in some way, as without them an element is missing, and that could be something as simple as having sculptures (created at the symposium) to represent the energy of each of our mountains.

- There should be representation of the 3 extractive industries - timber, water and farming. There already is timber in the wall, the mosaic represents water, and the

- There was not much info given on who is in charge of the budget costs? Also what happens if the budget cost goes over like the Tokoroa Project and delays the proposed stages. Is there any reassurance that the Council will take responsibility?

Design and procurement of water feature (running water within a redesigned channel)

Moss Baas & Oinks Retail BUTCHER Ed & Rence 07 883 8583

THE PUTARURU SCHOOL OF MUSIC

The Putaruru School of Music celebrated another year of musical success with a concert and prize giving at St Mary's Hall recently. This end of year concert was an opportunity to showcase their talents and improvements.

This year, the school of music provided lessons in guitar, keyboard, flute, recorder and brass instruments. The students played a concert for family and friends which was greatly enjoyed by all.



Students form a combined orchestra conducted by Anneke Burger.



Stacie Benis..

After the concert, prizes were awarded across categories from best first year student, and up to the overall highest trophy, the Heslop Family Trophy for best overall music student - won by Stacie Benis.

The school of music welcomes new students of any age or experience to register their interest for next year. Email: gpacey@ihug.co.nz for information.

Winners of Putaruru School of Music End of Year Awards:

Guitar Most Improved Beginner Jono Anniss

Guitar Best in Class Stacie Benis

Keyboard Beginner Most Improved Izzy Bentley

Keown Trophy Larize Benis

Flute Beginner Most Improved Larize Benis

Flute Best In Class Nominees: Ashlin Dykstra, Maungaatai Keene-Thompson

Winner Maungaatai Keene-Thompson

Lions Cup Nominees: Ashlin Dykstra, Maungaatai Keene-Thompson

Winner Ashlin Dykstra

Heslop Family Trophy Nominees: Ashlin Dykstra, Stacie Benis, Maungaatai Keene-Thompson

Winner Stacie Benis (guitar)

Larson Trophy Best Senior Student Nominees: Stacie Benis, Ashlin Dykstra, Maungaatai Keene-Thompson

Winner Stacie Benis (guitar/keyboard)

Toos Habraken Memorial Trophy - best effort Nominees: Evelyn Winter, Benjamin Coop, Sophie Thompson

Winner Sophie Thompson (flute)

Gairdner Cup Best First Year Student Nominees: Jake Shaw, Larize Benis, Skye Emperado

Winner Skye Emperado (keyboard)

Haumaha Trophy Nominees: Joshua Henderson-Knight

Winner Joshua Henderson-Knight

David Bell Scholarship: this is a scholarship for a talented student x factor-not necessarily the best behaved or the one that practises each week - the one with that special something:

Nominees: Evelyn Winter, Katrina Winter, Thomas Stratton, Larize Benis, Sophie Thompson, Jono Anniss, Joshua Henderson-Knight

Winner Evelyn Winter (brass)

Haumaha Trophy: For good improvement, attendance and progress on chords.
Winner William Walker



Evelyn and Katrina Winter.



Maungaatai Keene-Thompson.

PUTARURU DISTRICT RSA (INC.)

The President and Executive Committee of the Putaruru District RSA would like to wish everyone a Safe and Happy Holiday, and to spending time with family. Also thank you to the community of Putaruru for your wonderful support by Standing Alone on ANZAC Day and beyond.

The Putaruru District RSA provides Financial Assistance, Advocating for Service Benefits, Connections and Comradeship. You don't have to join The Putaruru RSA, or have served overseas to receive advice and support from us.

However if you would like to join the Putaruru District RSA, the annual subscription is only \$20 per year and is due to be paid by 31 December 2020.

You will receive an RNZRSA Club Card which gives each member access to a large number of discounts. These are accessed via an app on a smart phone, otherwise you can be supplied with a printed list and the codes that apply.

This is also a reminder to all current members.

For more information or assistance please contact: *President* Murray Bath: 07 883 3468, 021 023 62601 or *Secretary* Annette Comp: 07 883 7747, 027 6106584 your Local Support Advisors.

REVEAL YOUR WORLD

There are magic worlds everywhere. Why not share what your club or organisation is doing by letting The Prattler know about your special place.

You know the drill!

- *Don't hide your light under a bushel.*
- *An honour is not diminished for being shared.*
- *A joy that's shared is a joy made double.*
- *Everyone has inside of him a piece of good news.*

Email theprattler@prideinputaruru.com for details.

TIRAU PANELBEATERS



TIRAU TOWING 24 HOUR SALVAGE

Car Painting - Parts - Windscreen Replacement

28 State Highway 27 TIRAU 07 883 1476

027 494 8805
office@tiraupanel.co.nz

RECENT BUSINESS CHANGES IN THE AREA



THE ORCHARD THIEVES: New Business
57 Tirau Street, Putaruru: 07 883 8046



MĀKETĒ MAHI TOI, PUTARURU: Pop Up Artisan Market
19 Princes Street, Putaruru.



THE WOODEN FARMER: New Signage Around the Exterior
99 Tirau Street, Putaruru: 07 883 8874

PAWS
Kensington Street

Meowy Christmas from Stanley and his merry team: Betty, Annette, Kay, Valmai, Ian and Ross.

They are all going to have a well deserved holiday and will be away from Wednesday 23 December and back to treat me as I deserve to be treated on Tuesday 12 January 2021.

But don't worry, someone will be looking after me everyday especially on those special days, and there's always those pesky critters I'm so good at catching to keep me amused.

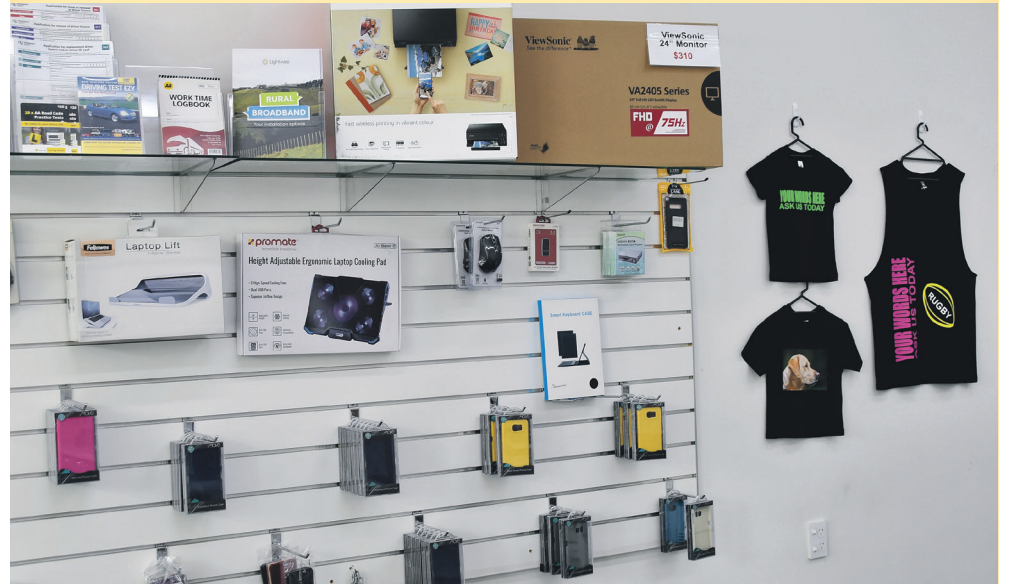
We have lots of wonderful gift ideas to suit everyone's budget.

But we ask you always remember "Pets are forever. We are not Christmas presents. We are family."

Merry Christmas from PAWS Kensington Street.



To appear in these FREE listings, please contact The Prattler.



PLANET COMPUTERS: New Location
58 Tirau Street, Putaruru: 07 883 3210



COUNTRYWIDE REAL ESTATE LTD: New Location
58 Tirau Street, Putaruru: 07 882 1310



OWLETS FOREST EARLY LEARNING CENTRE

*Owlets Forest is a purpose built
Early Learning Centre catering for children
from birth to School age.*

*We offer two separate rooms for children
to learn and develop at their own pace.*

*Our hours of operation are
Monday to Friday 7:30am - 5:30pm.*

*We have an open door policy and would love
to show you around our beautiful environment.*



**17 Neal Street Putaruru
07 883 8665
info@owlets.co.nz**

JUST LISTED



109-111 TIRAU STREET, PUTARURU

Bedroom 3 Living 1 Bathroom 1 Garage 4 PUT21878

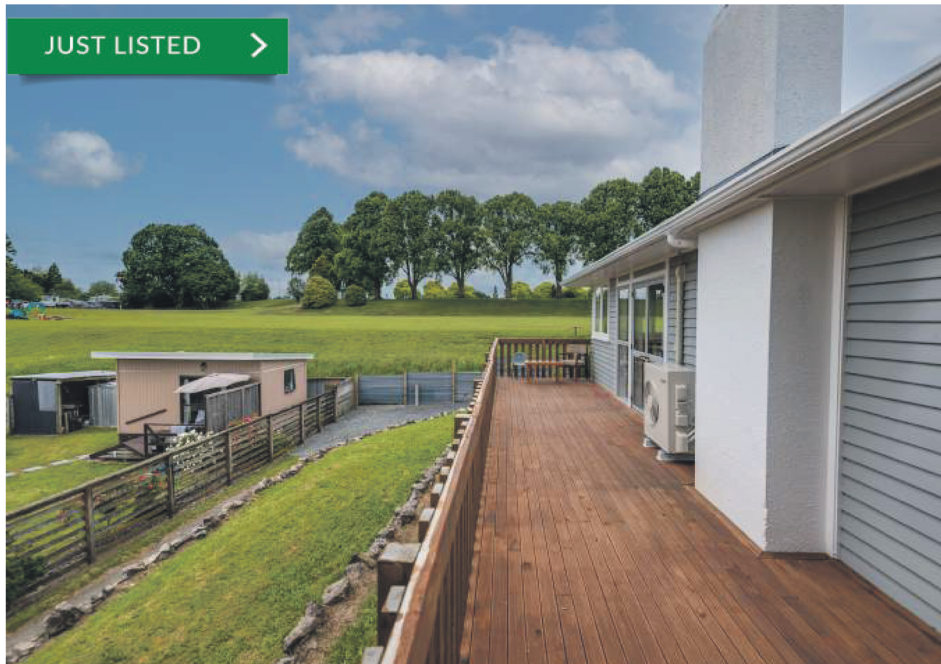
A Large 5,467m² site on 2 titles with great exposure to SH1. Includes a lovely 3 bedroom family home, big workshop, (2 mezz, floors, admin, etc). Other lockable sheds and heaps of vacant land with options for use.. Contact Don now to arrange an appointment to view



PRICE \$1,500,000 + GST (if any)
OPEN By Appointment

Don MacKenzie 027 497 2696

JUST LISTED



6 JONATHAN PL, PUTARURU

Bedroom 3 Living 1 Bathroom 1 Carport 1 PUT21876

A nice newly upgraded 1960's bedroom family home with some scope to add your touches.

The floor plan offers open plan lounge with heatpump and the potential to reinstate the fire to create a cosy winter atmosphere. The galley kitchen with feature flooring and island bench is perfectly positioned for summer entertaining which leads through double French doors out to the large deck.



PRICE AUCTION 15 December 12pm, 757 Te Rapa Road, Hamilton (Unless Sold Prior)
OPEN Sunday 12:30-1pm
 Stephen Horsfall 027 575 2414



MAPLE DRIVE ESTATE

PUT21848

This eagerly awaited subdivision has a range of sizes and affordable prices to suit everyone so you can make Maple Drive Estate your new home.



PRICE From \$180,000
OPEN Sunday 11-11.30pm
 Ros Hill 027 499 7147



MACKENZIE STREET, PUTARURU

PUT21872

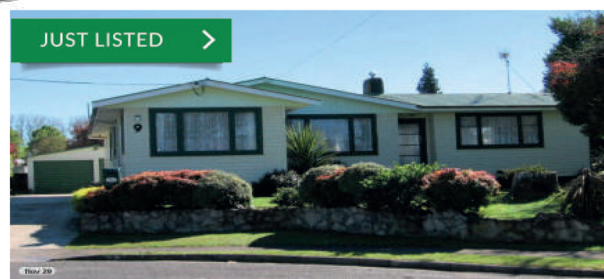
- Freehold Titles for greater security
- Elevated with a great outlook and sun reception
- Only the proverbial stone's throw to the supermarket

- * LOT 1. 492m² - \$312,500
- * LOT 2. 493m² - \$307,500
- * LOT 3. 494m² - \$322,500



OPEN By Appointment
 Don MacKenzie 027 497 2696

JUST LISTED



9 TEE STREET, PUTARURU

Bedroom 4 Living 1 Bathroom 2 Garage 4

Set on the old fashioned 1/4 acre flat section in a quiet cul de sac awaits your new family home. Well fenced for the children and pets so be in quick or miss out



PRICE \$420,000
OPEN Sunday 12-12.30pm
 Ros Hill 027 499 7147



22 BENT STREET, PUTARURU

PUT21878

This is a great investors opportunity with immediate rental income (\$65,000pa) from the 5 current stable long term tenants and the added bonus of land banking for the future.

There are scheme plans to subdivide a further approx. 17 lots from the remaining flat land with undulating areas that add character to the development.

Bedroom 15 Living 5 Bathroom 5 Garage 10



PRICE AUCTION 15 December 12pm, 757 Te Rapa Road, Hamilton (Unless Sold Prior)
VIEW Sunday 6 Dec 1-2pm Thursday 10Dec 5-5:30
 Ros Hill 027 499 7147



12 BEAR STREET, TIRAU

PUT21873

Bedroom 2 Living 1 Bathroom 1 Garage 3

5 Year old executive home close to Tirau shops. Brick, doubleglazed alum windows and coloursteel roofing. Open plan living, 2 double bedrooms and internal access garage. Top chattels and neutral decor. Also sep 3 bay garage workshop.



PRICE Offers Over \$520,000
OPEN Saturday 10-11am
 Don MacKenzie 027 497 2696



MICHAEL MURRAY
Principal Officer
027 474 6736



ROS HILL
Salesperson
027 499 7147



DON MACKENZIE
Salesperson
027 497 2696



STEVE HORSFALL
Salesperson
027 575 2414

Putaruru Office

30 Tirau Street, Putaruru

e. putaruru.nz@wre.co.nz p. (07) 883 3195

TRANSFORM AOTEAROA 2020: AT A GLANCE

Transform like many other organisations over the year, have had their normal tipped on its head but we have tried our best to soldier on. When 2020 served us lemons we chose to make lemon aide. Some of our programmes were cut short or even cancelled in the process. So our stats for this year are a little down but we know the contact that we have had, has meant the world to those who have kept in touch.

Taking a moment to reflect on the year gone by we have realised that stories are a force of life. Grand stories of heroism, grandeur and spender excite and give way to imagination of adventures and tales of greatness - while stories of emotion grip with feeling, passion and heart and take us to places of reflection and struggle. All these express where one has come from, where one is now and where one is going to be.



Transform Aotearoa CEO: Howard Goold.

The famous story of the hungry caterpillar comes to mind, an average Jo small and seemingly insignificant chose to venture off to feed a desire that life has got to have more meaning than the current circumstances tell. Over a process of time nibbling through many opportunities that have come across its way, but after each experience, is still left with the feeling of needing something more. Apples, pears, plums, strawberries and even oranges cannot satisfy the desire for more. So to mix it up a little it tries chocolate cake, ice cream, pickles, SWISS cheese, salami, a lollipop, cherry pie, sausage, cupcake and even a slice of watermelon, but the desire is still within for something yet greater. The caterpillar devours a leaf still ever hopeful that now it has gained enough experiences and extra weight during the process that it will have what it takes to be something more.

But instead of consuming more it decides to take a deep dark journey within, to process, evaluate and stock take. Wrapping itself in a crust of purposeful reflection. Allowing time to do its thing. Until healing and wholeness changes the heart within. A process one must journey in order to see the other side. Once this is done, the inner surge of gumption, passion, and desire urges the caterpillar to break away from all the things that once defined who it would be, until it emerges with a determination and a new sense of purpose, only to find that what it saw before and what it sees now are incomparable. Pumping of wings and moments to catch its breath it realises that all the struggles of the past were a part of the journey, that got them to where they were meant to be. No longer an insignificant caterpillar but now a beautiful butterfly, ready to explore with a fresh and greater perspective, better equipped to face the challenges in the world ahead.

Some people come to Transform feeling insignificant, with life experiences that could always be better, but they come with a desire that there must be something more. They devour programmes and courses one after the other still hoping that there is more, until they realise the only one in their way of change - is them. That is when they go deep within and process all the tools and knowledge gained along the way, including a greater perspective of who they were created to be. This is a process Transform gets to witness on a regular basis. We get to champion, encourage and celebrate the process of change and then watch as their wings gain strength and they are able to take flight, leaving the past behind and exploring a world of opportunity, they were designed for.

Stories are a force of life. What does your story tell of where you have come from, where you are now and where you will be? But most of all what will the story of your legacy tell? What stories do you want to leave behind for future generations? What tales of heroism, grandeur, and splendour? If nothing else Transform is determined to leave a legacy as a place of hope, life change and transformation, that not only affects people who walk through our doors today but those for generations to come.



For those of you who get Heart-Warming Friday each week you will know, that life change of this sort is happening in

Putaruru on a regular basis and we hope you enjoy the stories that we share?

We are pleased to announce that Transform has had the privilege to see 509 people attend programmes so far this year.

- Our women's empowerment programmes catered to 61 women, determined to make life better for themselves and their families.
- The men's programmes invested in 16 men to see them equipped to be better husbands, partners, workers and friends.
- The after-school programme averaged 25 children each week helping them to be heroes in their world and make wise choices and decisions.
- Te Reo Maori classes had 18 regular attendees.
- The Heavy Transport class 2 and 4 saw 19 locals obtain truck licences and 6 have found full time employment.
- Driving Lessons saw 106 gain confidence with Lamen in the training vehicle and 10 young people did the learners 2 day programme and got their learners.
- Parenting courses had 21 parents and caregivers gain valuable information on raising their children or grandchildren.
- Our CAP class saw 3 brave souls address life controlling dependencies.
- The Shine and Strength programmes in the local college had 11 graduate, with greater confidence in who they are and want to be.
- Our Barista training saw 29 individuals gain an internationally recognised certificate to help boost the hospitality industry with 4 gaining immediate employment.
- Next year we are excited to introduce our long-awaited teen girls' programme for young ladies who need encouragement to stay in their lane - this begins in term 1 2021.
- Tu Mia our new stage 3 women's programme helping women gain paid employment.

All new First aid programmes are coming to Transform, self-defence, cooking on a shoestring, and a Customer Service ITS programme. All of which we hope will either increase people's chances of obtaining employment or better providing for their families.

English as a second language is all set to go once, we have a few more numbers. So please if you know anyone who could benefit from this ask them to get in touch with us.



Danny Scott. keeping us focused and the words of wisdom that sometimes feel like a kick in the pants. Lamen and Belena for their dedication to the programmes that they run, the people who attend and developing the facilitators that assist them. These two have huge hearts and are ever watchful over those in their care. We see how excited they get when people succeed and likewise, I see how they hurt when people take advantage of them and their generosity. They are hero's at Transform.

We are continually humbled by the progress and determination of the souls that enter our doors. Some faster than others but thankfully it is not a race, and we allow everyone the dignity to process change in their own time. It is also a pleasure to work with dedicated staff who have a heart to see those who come, reach their potential and help facilitate the process.

We would like to thank:

Howard our CEO for all his hard work this year



Lamen Hohaia.

Our amazing facilitators who dedicated themselves to serving in the programmes they are a part of. Debbie, Fiona, and Leslie who are behind the scenes but unbelievably valuable to the running and operation of Transform. Our amazing Board for their watchful presence to make sure we do everything legally and govern us, so we remain faithful to the call and keeping us accountable to what we hold in our hands. All the agencies and services both public and private that we work with on a weekly basis. Thank you for walking with us to see Putaruru be the town we all know it was intended to be. Finally, all the funders who so generously put forward the finances to partner with us, pay our salaries and allow us to operate the programmes we do. Without you we simply would not exist. Thank you for believing in what we do - our success is yours too.

All the staff at Transform would like to take this opportunity to wish everyone a very Merry and safe Christmas and we look forward to working with you all again in the New Year.



WE TAKE CARE OF WHAT BUGS YOU!

Specialists in farm pest control.

No travel charges in the South Waikato.

insects

spiders

rodents

birds

ants

wasps

0800 155 227

Locally owned and operated.

TIRAU EARTHMOVERS LIMITED

Your one stop shop for all earthmoving and roading requirements



Effluent Ponds



Stock Underpass



Car Parks



Farm Races

1906 State Highway 1, Putaruru, Phone 883 8372 or Freephone 0800 847 283

www.tirauearthmovers.co.nz



Kuranui School

"Striving to be the best we can in a caring and safe learning environment."

66 Waiomou Road
RD2, TIRAU 3485
Phone (07) 883 4866

e-mail: office@kuranui.school.nz
website: www.kuranui.school.nz

End of 2020

Here we are at the end of our school year already! And what a year it has been for everyone! The children have had a busy term in Term 4 with Jellybeans Music, Athletics, Cricket tasters, Gala Day, Class trips and the Seniors Camp just to name a few, along with end of year celebrations and prize-giving.

We hope next year will be a better year for the World. But we are very thankful for our wonderful country and what we are able to do here. Have a safe and happy Christmas break. We hope you get to go on holiday somewhere in New Zealand, maybe even seeing some of it you haven't seen before. We look forward to seeing everyone back next year! ☺

Te Maahuri Class Trip

Room Te Maahuri went on a class trip to the Kihikihi Space Centre, then to the Te Awamutu Swimming Pools.

The children had a lot of fun and loved showing what they had already learnt in class. The children enjoyed the Virtual reality headset that takes them on a journey through space. What a great way to end the year!

Te Kaakano Class Trip

Room Te Kaakano went on a class trip to the Hamilton Zoo.

The children had a wonderful day even though it was a bit wet.

They were so lucky to see the baby rhinoceros. The tigers were also a big hit along with the spider monkeys and meerkats! It sounded like they had a great adventure! ☺

Te Raakau Camp

At the time of writing this room Te Raakau were preparing for camp to Keswick in Rotorua. They are going to be going to Te Puia, Velocity Valley, Waimangu Volcanic Valley, 3D Trick Art, Skyline Gondola and the Luge and the Redwoods Tree Walk! They are certainly lucky children being able to experience so many great things. We look forwards to hearing from them about their adventures!



Be a [reader](#) and a [contributor](#), contact: theprattler@prideinputaruru.com

We can assist you in spreading the word... enquire using the above email address and be a part of a sharing community...



St Mary's Catholic School News



Year 7 and 8 School Camp:

During Week 7 of Term 4, the Year 7 and 8 students had the opportunity to head down to Blue Mountain Lodge Camp to experience a week of fantastic activities. Here are some pictures from their exciting time!



The Year 3 and 4 End of Year Trip

On the 2nd of December, Year 3 and 4 students had the exiting experience of going to Esxcite (Hamilton Museum) and the Hamilton gardens for lunch. All the students had a great time!



TONY CHRISTIANSEN AT THE PLAZA

On 12 November the Rural Support Trust brought Tony Christiansen, a world-leading motivational and inspirational speaker to the Plaza Theatre. This was a free event preceded by a BBQ and socialising.

The Rural Support Trust is a charitable organisation set up to work with the rural community when times are tough on the farm or in the family.



Tony Christiansen at The Plaza.

Tony Christiansen was humorous, bold and straight talking as he engaged the audience with his life story. He has no legs, a result of a horrific train accident when he was 9 years old, yet has achieved remarkable feats in his life.

Tony sees one's attitude as the determiner of success in life. This he explains is different to every one of us.

The perceptions or judgments of other people are our biggest obstacles. People may say, "life is not fair," but it's what you do about it that makes the difference.

For Tony, giving up is not an option and he urged those attending to abandon the "woulda, shoulda, coulda" way of thinking and replace it with "I am, I can, I will," every day. "It's your choice," he says "to have a great day, or not."

Tony encouraged the audience to set their own challenges, rather than accepting the limitations imposed by their own attitudes and other people's perceptions.



Contact the Rural Support Trust on 0800 RURAL HELP for a confidential chat about you, your business, the weather, your finances - or a neighbour, partner, friend, family member, or worker.

NEW TABLE IN PUTARURU PRIMARY NATIVE GARDEN

The Native Bush Project at Putaruru Primary School is developing well. During a weeding session, Helen, one of the tai chi helpers, suggested that there should be somewhere to sit.

GOLDPINE came to the party, donating a fabulous seating arrangement that can serve as an outdoor classroom or just a place to sit near the kahikatea trees. The Taoist Tai Chi members did some fundraising to pay for the installation. Thank you Goldpine, Alan and Snow. It's awesome.



Some of the Taoist Tai Chi members with a class from Putaruru Primary.

L.J. HOOKER®

HOW CAN WE HELP YOU?

We have a team of local, experienced salespeople, working together to meet your real estate needs.

Your Local Agents Call us: 07 883 8810



Fred Seidel 027 474 5102
Sales



Diane Urbahn 027 290 8959
Sales/Office Manager



Rebekah Takao 021 154 0729
Rentals

Putaruru Real Estate Ltd

Phone: 07 883 8810

Email: putaruru@ljh.co.nz

OBITUARY: ANNE EDMEADES

Who was Anne? To those she met and knew her as part of the Putaruru community, might agree that Anne had an amazing memory for dates and details, liked to hold court, talking animatedly, and would say something 2 or 3 times for emphasis.

More importantly she liked to listen closely to others, and hear what they were saying, and ask questions. Anyone she met, she was able to take on the good and bad, the similarities and differences, and accept people as they were, making each feel welcome and at home.



Anne and Royce outside their Princes Street Jewellers.

was required to visit her weekly on a Friday. This meant Moira having to have the children ready to leave as soon as Trevor got home from work on Friday afternoon to ensure they caught the final ferry from Devonport to Mechanics Bay - long before the Auckland Harbour Bridge was built.

Anne's recounting of her early years her brother, Peter, and sister, Julia, all close in age includes fishing for snapper and digging for toheora at a number of favourite Northland beaches including Glinks Gully and Bayleys Beach with her father and her two younger siblings. Together they were known as the 'older 3' of seven children.

As a young woman she joined the chorus of several musical productions with the Whangarei Operatic Society, including *South Pacific*.

Anne's teenage summers were filled with visits to her cousin Trish in Auckland and joining their family to spend weeks camping in army surplus canvas tents at Long Bay in Coromandel, with the chest of drawers in residence!

Anne loved to travel, and was never happier than sitting in the passenger seat, going on a road trip, being driven around looking at the countryside - in any country. Anne was in her late teens when she went on her first overseas travel - a cruise to Fiji.

She also talked of Friday night dances in Whangarei and a new dress being whipped up by her best friend Helen for each of the dances. Helen would go on to make Anne's bridal gown and bridesmaids dresses.

It was in Whangarei that Anne met Royce, when she ended up at the flat where he was living after one of those Friday night dances. She dragged him out of bed and the rest, as they say, is history.

They married in Whangarei in 1967 and lived there until they left for the exciting new horizons of Perth, WA, a city that was experiencing growth and prosperity due to mining in 1968. As Anne would point out, what is now an 8-hour direct flight was back in those days three flights via Sydney and Melbourne.



Anne at work.

the family travelled in their orange and black Valiant Hemi Pacer towing a caravan

Anne was proud of her family member's skills and achievements - a doer of deeds, rather than a giver of things.

But what about before then. Who was Anne Edmeades?

Anne McKeown (no middle name) was born September 12 1946 in Whangarei - first born child to Trevor and Moira, eldest of 7 children. Anne often spoke of the formidable matriarchs in her family and her stories included the great escape from Poland of Nana Gurinsky on her father's side, and the relocation of the family from Te Kuiti to Whangarei by her Nana Spring for the betterment of her own mother's health as a youngster. Let's not forget Granny Pickett who lived in Parnell. Such was her presence that the family

across the Nullarbor, stopping to work in Mildura, Melbourne and Sydney before filling the car up to the brim with all their worldly goods, and with only space for Royce to fit into the driver's seat, the car was put on the boat. They boarded the plane back to New Zealand, and headed to Royce's hometown of Putaruru where they were surrounded by the Royce's extended Edmeades family.

Initially they lived in a cottage on Tirau Street, which backed on to the fields of Cambridge Street School. In the mid 1970s the family moved to Galway Crescent, with its wonderful views across farmland, and handiness to 'the river' (the Oraka Stream), where Megan and Wayne spend much time swimming and exploring. In 1983 they moved to their current family home on Arapuni Street, a home that Royce renovated from top to bottom.

Soon after they arrived back from Australia, life changed quickly. Virtually overnight, Anne and Royce became business owners, buying the Duke Street Food Bar. At the same time they became parents again with Wayne's arrival. At this time, Anne was working upstairs at Halligan and Emslie accountants as well!

When Anne and Royce bought the jewellery business from Royce's parents, Warren and Gwen Edmeades, Anne started to become well known to the Putaruru community. Anne ran Edmeades Jewellers at its original location on Tirau Street (on State Highway 1 opposite the BP service station).

Several years later, the opportunity came up in the early 1980s to purchase the business known as Woofindin Jewellers and the two businesses were amalgamated to the premises corner Princes and Duke Streets. Back in the day when there were two jewellers in town! Anne was proud to call her adopted town Putaruru her home.

By the 1980s the business had become part of the Gift World chain, and shortly after Edmeades Jewellers joined the Nationwide Jewellers Association. Anne was front and centre of the day to day running of the shop, while Royce had a rural delivery run and returned to the shop to do the repairs later in the afternoon. In the late 1980s, after selling his rural delivery business, Royce found a jewellery business that needed a refurbish in Cambridge, and Edmeades Jewellers and Gift World opened, proving to be the little shop that could, going from strength to strength over the years.

In the early 90s the opportunity presented itself to purchase the Nationwide Jewellers in Tokoroa. The three shops were run in conjunction with great staff. From the mid 2000s, Edmeades Jewellers continued in the Putaruru and Cambridge locations, after the Tokoroa business closed as a consequence of changes happening in the Tokoroa community and Kinleith.

Anne took no time to fill the generous space offered in the new home on Arapuni Street. A gift from Megan of a glass elephant from the Hokitika glass factory while on the 1985 Putaruru High School South Island Field Trip, led to the start of a collection of elephants - with their trunks up for good luck. The bookshelves in the new house became loaded with books on the Royal Family. She had a special fondness for Harry. The china cabinet filled with Noritake Japanese porcelain china. And she started to collect items with images of sail boats.

Her collection of one-off pieces of hand blown glass, which started with a Hoglund piece featuring a lily, would provide her with an additional focus when travelling as she would seek out glass artisans to watch them making their glass creations. Once again, that first hand interaction with people doing what they loved, filled her with curiosity and awe.

The area around the house also allowed for the expansion of Anne's other passion - chooks. Having chickens (and the odd rooster) was a McKeown family tradition providing practical outcomes as well as the pleasure that comes from the therapeutic benefit from watching them bok-bok around the house.

Even while holidaying in Rarotonga with the family for Megan's milestone birthday last year, Anne was out looking for the chook laying the eggs, amongst the many that free-range everywhere on the island.

During the 1980s-90s, Anne was well settled into being a mother of two teenagers and the owner of gift and jewellery businesses in Putaruru, Tokoroa and Cambridge. She took up golf and enjoyed playing 'ladies golf' although she could never move her handicap very far. She developed several lifelong friendships through this, and celebrated her 50th at the Putaruru Golf Club in 1996.

In 2007 Anne successfully stood for election for South Waikato District Councillor as one of the three Putaruru Ward Councillors. She held this role for three terms, retiring in 2016. She enjoyed the role, enjoyed speaking for the Putaruru community at weekly council meetings and committees, and often commented that she would spend her Mondays at the Cambridge shop doing the reading of council papers for meetings. Her 100% attendance at Council meetings was noted.



Where there are hens there are eggs.

OBITUARY: ANNE EDMEADES (CONTINUED)

Anne enjoyed the friendships and purposefulness of being the Putaruru SWDC representative on Pride in Putaruru and later, Putaruru Moving Forward.

However, for many reading this, Anne will be remembered as 'the lady in the jewellers.' As the comments on the Edmeades Jeweller Facebook page attribute, Anne was held in high regard:

So sad to hear, only found out today of your passing, she was always able to make connections with our whanau and would always ask how my in laws were... the only person whose shop remained for a very long long time... a well known identity in Putaruru now left for greener pastures... rest in love Anne.

Rest in love my friend. Always looked forward to chat with you at the shop. Your smile and humbleness enveloped all who knew you. To the whanau, embrace her life for we have lost another teacher of the past. Moe mai ra i te taha o te matua. Kati ra. Arohanui.

Nothing moved Anne more than to be asked to go above and beyond to assist someone in finding a special gift or creating an item of jewellery or providing a service to assist others to achieve their vision. Part of this was due to the sense of pride in the service she and Royce were able to provide in not only helping people with their jewellery and watch repairs, but also with Royce's unique skill-set and attention to detail in doing clock repairs and engraving of school and sports club trophies in the South Waikato and Cambridge areas. This also included pride in Royce restoring customers' special mementos. Theirs was a strong symbiotic relationship in that way - Anne talking up the magic Royce could do and Royce having to deliver the magic!

Anne also spoke proudly about the achievements of her two children. She would love to tell people of Megan being the first to go to university in her family and of Megan's master's study. While she could never quite recount what exactly the focus of the Masters was, she was proud nonetheless. She also thought it hilarious when Megan got together with and later married a dairy farmer in her late 30s as she had been shot down when she had suggested such a thing when Megan was younger.

And Anne's most repeated stories were those she told about Wayne - she would love to recount stories of his childhood to one and all, and loved that he was an endless source of fun, wit and cheekiness for many. She was a champion for Wayne's potential and was no prouder than when he found his calling and completed his radiography degree closely followed by his MRI training in his late 30s.

Throughout the time of running the business, Anne and Royce continued to travel, always together to Australia, and sometimes Anne went other places on her own. As well as travelling to Australia with her sisters, she got away for the occasional foodie

road trip with sister Wendy, or a garden tour with Robyn. She was able to do this thanks to the loyalty and capability of staff members in each of the shops - specifically Grace Hutcheson in the Putaruru shop who worked for Anne and Royce for more than 40 years.

Andrea Shaw also carried out various roles in the shops over the years. The creativity of both was appreciated in their ability to zhooosh things, doing eye-catching windows for special occasions and generally ensuring the shop stock was well displayed.

Thanks to the support of staff and Royce holding the fort, Anne was able to travel to Thailand in 1987 with others from the Nationwide

Jewellers Association. On that two-week trip exploring all of the country, including the Golden Triangle, was visiting areas where rubies and sapphires were being mined. Anne purchased some distinctively Thai cut gemstones which were later set into earrings and a ring. She also added further to her elephant collection. Anne was proud of the expertise about gems and jewellery she developed, and happily shared it with those who were interested.

Anne also visited Megan in Japan in 1994 where they explored Tokyo and Sendai. It was here, high in the mountains of rural Japan that they found themselves naked in an onsen (Japanese bath) with three local Japanese women. Once again, Anne held court and the cultural and language barriers melted away.

Royce and Anne's time in WA started a curiosity with this part of the world. After they returned to New Zealand, five of Anne's siblings moved to WA, including the outback mining town of Mt Magnet and more recently in and around Mandurah, south of Perth. Earlier this year, after 18 months of health surprises, Anne decided that the pep had returned to her step enough to head over to join the family celebration in WA for her youngest sister's 60th birthday and imminent arrival of a grandniece.



Receiving a close inspection from Anne.

This was where Anne's earthly journey ended, but not before all her family members gathered and spent time with her.

Anne's sharp wit and dry sense of humour shone through at this time - making everyone laugh with her classic one-liners. She talked of Grace, and her grand-kids, Stasia, Chevy and Dakota. She spoke of people in the Putaruru community by name. She complimented her sister Carol on her nursing skills. She told Royce off for his poor taste jokes. All said in a few words, but she conveyed so much.

Anne's family were grateful they had the privilege of spending her last two weeks with her, and thankful that she was surrounded by her extended family from the second she got off the plane until the minute she passed on February 28, 3pm NZ time.

Anne would have got a kick out of her stopping the traffic on Pinjarra Road, one of the main roads in WA when the hearse left the funeral home to a family service. Anne's whole extended family, sisters, brothers-in-law, brother, sister in law, nieces, nephews, grand nieces and nephews were all at the family service held at Kings Park in Perth. And a kookaburra sat in the tree above us, watching their little ceremony.

Undoubtedly the shock of Anne's sudden passing was felt by all her friends, family and community in Putaruru, and it was magnified by the closure of the Putaruru shop brought on by Covid lockdown, after nearly 50 years of ownership under Anne and Royce and 70 years since it was set up by Royce's parents Gwen and Warren Edmeades. Royce, Megan and Wayne are grateful for the support and messages that flooded in expressing sympathy for Anne's passing.

However, Anne left us in a way that only she could have orchestrated and one that would be remembered - having fun on holiday, reuniting her family from both sides of the ditch and leaving the shop ready waiting for her return.

Anne's sister Carol wrote the following poem for the King's Park family ceremony held on March 7.

Conspiracy of the Kookaburra and Kingfisher

From the lofty gum trees
Kookaburra calls
Kookaburra cackles

So loud is he that
Over the seas
Kingfisher responds with accuracy

Two fluffy birds
Have something in common
Our dear Anne
Will not be forgotten

Royce, Megan and Wayne, along with the McKeown and Edmeades families wish to express their thanks and appreciation to all who sent messages, flowers, and shared their fondness for Anne. Royce is thankful for your custom and friendship with Anne throughout the years of Edmeades Jewellers in Putaruru.



Anne and Royce set up outside Edmeades Jewellers.

Jewellers Association. On that two-week trip exploring all of the country, including the Golden Triangle, was visiting areas where rubies and sapphires were being mined. Anne purchased some distinctively Thai cut gemstones which were later set into earrings and a ring. She also added further to her elephant collection. Anne was proud of the expertise about gems and jewellery she developed, and happily shared it with those who were interested.

Anne also visited Megan in Japan in 1994 where they explored Tokyo and Sendai. It was here, high in the mountains of rural Japan that they found themselves naked in an onsen (Japanese bath) with three local Japanese women. Once again, Anne held court and the cultural and language barriers melted away.

Royce and Anne's time in WA started a curiosity with this part of the world. After they returned to New Zealand, five of Anne's siblings moved to WA, including the outback mining town of Mt Magnet and more recently in and around Mandurah, south of Perth. Earlier this year, after 18 months of health surprises, Anne decided that the pep had returned to her step enough to head over to join the family celebration in WA for her youngest sister's 60th birthday and imminent arrival of a grandniece.



Plumbing Laser

- **All Maintenance**
- **Repairs & Renovations**
- **Blockages**
- **Gasfitting**
- **Drainage**
- **Hot Water Units**
- **Gas Fire Services**
- **Septic Tanks**
- **Heating - Gas Fires & Woodburners**
- **Leaking Pipes**
- **New Housing**
- **Water Treatment Systems**
- **Natural & LPG Gas Installations**

24 Hour & 7 Day Service

Servicing the South Waikato & Extended Areas



15 Rolfe Way, Putaruru



Phone: (07) 883 8597

MAKETE MAHI TOI, PUTĀRURU

A number of artisans launched the collective pop up store Māketē Mahi Toi, Putāruru on Monday 23 November. The pop up will operate through until mid-January 2021. Following the experiment participants will engage in a focus group with the SWDC to provide qualitative research data, which can be used to inform further initiatives to catalyse all the town centres within the district.



Māketē Mahi Toi, in Princes Street Putāruru.

Operating out of Māketē Mahi Toi, Putāruru are:

Mason	plants and seeds
Carol	jewellery
Anna-Marie	dream catchers
Adele	key rings, \$5 flannel and soap gifts
Gareth	pottery
Amanda	soaps and candles
Roopali	Indian sweets
Edward	wooden trays and shelving units, 21st boards
Christine	restored furniture
Nothing Naughty	protein bars
Putaruru Fibre Crafters	knitting, wool, felt bags
Foxes Trousers	Christmas wreaths and bone, Christmas decorations
Rawleighs & Ricks	timber chopping boards and Christmas decorations
Woodcutters	spinning tops, bowls and chopping boards, beehive frames
Girl Guides	crunchies, face masks, jewellery holders, bracelets
SeniorNet	cards and calendars

Two or three people work in the shop each day, taking turns and looking after and selling each other's products and at times there are artisans working on their goods.

Some are unable to be in store so goods are sold on behalf such as the Girl Guides and Woodturners.

Comments from public include, "So great to see something in Edmeades old shop." "Cool shop." "I need something for my Nana."

U21 WOODCHOPPING CHAMPIONSHIP 2020

With Covid putting a halt to a lot of woodchopping around the country and all woodchopping overseas, the NZ U21 Woodchopping Colts Committee decided to hold an event for U21 wood-choppers from around New Zealand and where better to have it that at the Lichfield Hall right here in the South Waikato.



All competitors: Tytan Semenoff, Johnson Semenoff, Jackson Bellamy, Morgan Bolstad, Harry Hardie, Matthew Gower, Cleveland Cherry, Sam Bellamy, Finn Sloan, Jack Richards, Billy Sloan, Micheal Trow. Twelve competitors from Whangarei, Pukekohe, Hamilton, Taumaranui, The Republic of Whangamomona, Stratford, Blenheim, Tuatapere in the deep south and a local from Putaruru all came to chop it out to be named U21 Champion.

Throughout the evening the competitors had cut an Underhand block, a Standing block, a combination Underhand and Standing blocks and completed a Single Saw.

The winner with the most points at the end of the night and the U21 Champion was 20 year old Cleveland Cherry from Putaruru taking home the big prize of \$700 and a new axe from Engineered for Axemen, 2nd Sam Bellamy from Stratford and 3rd Micheal Trow from Hamilton.



Winner U21 Championship 1st Cleveland Cherry, 2nd Sam Bellamy, 3rd Micheal Trow.

An Underhand Handicapped Elimination was also held with the winner being 15 year-old Jack Richards from Tuatapere, 2nd Matthew Gower from Whangamomona and Morgan Bolstad from Taumaranui.

A huge thank you to all the locals who sponsored the event and everyone who bought tickets to come and watch. We hope to see lots of locals come enjoy and support the competitors at the Timber Museum Chop on 6 February 2021 being held at the Putaruru Timber Museum.

WANTED: TEEN VOICE IN THE PRATTLER

Would you like to be part of a small group that gathers and shares the voice of teens in our community through a regular Prattler column?

Interested?

Send an email to us and we'll arrange a chat with you to share what we're thinking and how the thoughts of teenagers can be gathered, heard and shared.

Our address: theprattler@prideinputaruru.com



SELF CHECK UP FOR GROUPS PRATTLER CHALLENGE (TAKE THIS CHALLENGE WITH OTHERS IN YOUR GROUP)

Place a tick in the appropriate box/s you associate with.

- ☐ sports/fitness/outdoors
- ☐ church/education
- ☐ hobby/home business
- ☐ youth
- ☐ agriculture
- ☐ transport/logistics
- ☐ art/craft/theatre
- ☐ community group

Does your group share its activities in The Prattler?

- ☐ Frequently
- ☐ Occasionally
- ☐ Never



Thank you! We very much appreciate your support.



Share your news with us every issue and maintain the continuity.



Take up the challenge to contribute to The Prattler and promote your group activities!



Lichfield School

LEARNING – TODAY, TOMORROW, ALWAYS



Hei akoranga - inaianei, apopo, mo ake tonu atu!



A Visit to Ngatira Marae

In November our school visited Ngatira Marae. We were welcomed on with a powhiri, before engaging in a series of activities. We had the opportunity to walk up Kaimata Hill, where we learnt about some of the native plants and foods that can be found in the forest. Our senior students stayed for dinner, before returning to school and some of our junior classes had an overnight noho. The following day they went on an historical walk to the water tower, learnt about weaving with harakeke and helped to paint the fence.

Thank you to Henry Macown and the tangata whenua of Ngatira who were such wonderful hosts to us. We really learnt a lot and hope to visit you again soon.

Kai Time

As we got called in “Finally dinner time” I said to myself, “I’m starving for food”. “What end of the table do we start at?” I asked. I put some food on my plate, and then I sat down at the table with my friends, soon after they served the ice cream to the tables. So delicious and I wanted more.

By Cooper



Kaimata Hill

I heard a soft murmur of people shifting uneasily around me, uncomfortable with the situation. I felt the damp, mossy bench standing, proudly below me. Everything seemed to melt away to a distant land, as I was swallowed up by the beauty of green, fresh scenery. I took a sharp intake of breath. I gazed up, my eyes as big as saucers, enthralled as I felt the dappled sunlight stream invitingly onto my transfixed face, my head a whirlwind of thoughts and emotions.

I closed my eyes, dappled sunlight danced behind my eyelids. I took a deep, calming breath as the damp and fresh forest smell engulfed me. I felt slightly overwhelmed by the carpet of green around me. I felt the muscles relax one by one from the tips of my fingers to the tips of my toes. The sounds of the excited and happy birds, keen to make their song heard, echoed off the canopy of trees and rang in my ears. All too soon the enthralling moment ended with a sudden burst of chatter. My heart sank.

By Bronwyn

Serving the community since 1884
www.lichfield.school.nz
Ph 078836816
office@lichfield.school.nz

PUTARURU RANGERS AFC

2020 started out well for the Putaruru Rangers AFC. Thanks to our generous sponsors Laser Electrical Putaruru, Tirau Earthmovers and Le Pine & Co Putaruru, we were able to order a new uniform, new training equipment and new match balls.

Then as the start of our playing season in March approached, so did Covid-19.



Rangers team photo.

Our season finally started 13 June after NZ moved back to level 2, safely allowing groups of up to 100 to gather. We had a few disruptions to our season as the covid levels changed but we were overall very lucky to get in a good season of football.

Waikato Football Association split the men's divisions up into 5 sections this year instead of 4 to decrease the number of teams in each division from 10 to 8. Still giving us a good season whilst not making it too long. They also cancelled the usual Waikato Cup/Plate competitions so we didn't have to worry about those this year.

Highlighted games include a 3:2 win over the Northern United Humblebees and a 3:1 win over Te Awamutu C div team. We finished the season in September with a 2 all draw against Melville United Men's C.

As the season stretched well into calving this year we were glad to have some awesome new players that jumped right in, finishing the season lower on the table than we'd hoped, we still scored 26 goals overall and loved seeing more people in the grandstand at Glenshea park each home game.

The response from the ladies of our town has been brilliant to see. By the end of the men's season we had close to a dozen women training alongside our men each week. Looking forward to watching women's football in Putaruru next year!

Thanks to The Cook for hosting our after-match functions. Thanks to Zane West, Kelvin Rima-Samuels and Chris Van Der Laar for refereeing our matches. Thank

you to Peter Darby for manning the lines every week. And we can't thank our ever supportive, hard-working, best champion Derek Roberts, enough. He has kept this club running for our town and continues to be a pivotal part of the Putaruru Rangers. Thank you Derek, we appreciate you very much.

We can't finish this report without acknowledging the loss of Bevan Edmeades in April of this year. Bevan played football in the South Waikato his whole life, many years for the Putaruru Rangers. He was an integral feature of our back line, a player you could count on, with great skill, speed and an awesome long kick. You will always be greatly missed Bev.

Looking ahead to 2021, things are changing at the Putaruru Rangers AFC! We are looking for all ages and stages of people interested in playing football. If you love the game, want a fun way to increase your fitness, enjoy being part of a team we want to hear from you! Our men's teams start from age 16, with no upper age limit. There is also an option to run a men's over 35 team too. We are super proud to be able to offer a women's team option next year! Same age restrictions apply, 16 years and up.

The landscape of community sport in NZ is changing rapidly. Sport Waikato have restructured as have other sporting agencies affecting the delivery and sporting options available to us all. The Putaruru Rangers would like to fill the football gaps.



Rangers v Waikato Unicol.

The Putaruru Rangers would like to provide football education for all ages next season. With training courses in coaching and refereeing also available. If you want to get involved with these or join our committee please get in touch also. Football is the most widely played sport in New Zealand. We want you to join us!

WHAT A DIFFERENCE A WEEK MAKES IN SPRINGTIME

The Spring Event at the Community Garden planned for 8 November was postponed due to an unsettled forecast. Seven days later a perfect Sunday brought people along wanting to make the most of a big selection of plants and 2nd hand tools at good prices - there are some seriously keen gardeners in Putaruru!



The Community Garden Spring Event day. All age groups over a busy couple of hours meant organisers took a healthy profit to put towards our fixed running costs.



Meanwhile our home gardens are in a 'wait and grow' stage with several of our participants taking the initiatives to expand planting in their backyard with favourite summer produce such as watermelons and radishes, and sunflowers to interest young family members. We have provided appropriately sized tools.

The Community Garden has donated a potted tomato plant to those who have expressed interest plus to some senior citizens in our Community who love to have home grown tomatoes with their meals.

Over the Christmas - New Year period as usual our deliveries scale down while outlets are closed for the holidays. Anyone needing vegetables in this time frame can come to the Garden on Tuesdays between 9:00am and 11:00am and the same time most Fridays except Christmas Day and New Year's Day when the picking will be done on Thursday 24 and 31. Garden members will be on hand to ensure picking is done carefully and there is enough to go around.

Everyone at the Community Garden wishes all of you a Happy Christmas with family and friends. Here's hoping 2021 will be less of a challenge.

We need to remember though that in our little country we have come through in a way that is the envy of others. Let's cherish that!

HELP US KEEP OUR COMMUNITY UP TO DATE



Lots of things happen in Putaruru between each issue of the Prattler. Some events are known, some unplanned. Everyone can contribute to this open sharing - we value your contributions. Email: theprattler@prideinputaruru.com

You can help by:

- advising us of any breaking news
- allowing us to cover any promotions you are planning
- urging clubs, organisations, teams, schools you belong to, to appoint a reporter to share what you are doing with our readers, and viewers
- suggesting people and historical matters that we can interview/describe through our media formats
- subscribing to our PiP TV channel
- letting us know about positive things people are doing in the community
- suggesting worthwhile community projects
- sending us pictures of community events
- advising us of new businesses, or alterations you have made to your own business (free)

www.putaruruelectrical.co.nz

ELECTRICAL ENGINEERS AND CONTRACTORS



Jan, Wayne & Staff wish all our clients a very Merry Christmas & a Happy New Year



Office will be closed from mid day Wednesday 23rd December until 9am Monday 11th of January. Electricians will be available over this period.

24 HR 7 days a week phone 07 883 8488



RESIDENTIAL COMMERCIAL RURAL INDUSTRIAL

Address | 7 Taupo Street SH1 Putaruru 3411 Postal | P.O. Box 235, Putaruru 3443
Phone | (07) 883 8488 Fax | (07) 883 8392




Rangiura

***The Rangiura
Fundraising Committee
would like to take
this opportunity to express
thanks and gratitude
to all who continually support
and sponsor
Rangiura Home and villages,
all the projects we undertake,
and the continuing benefits
they provide.***

Seasons greetings to all.



TE WHAREKURA O TE KAOKAORO A O PATETERE

PO Box 184 Putaruru
07 883 3780
office@kaokaoroa.school.nz

“Whangai te iti kahurangi

December 2020



Tainui Waka Kapa Haka Pōwhiri

Tōia mai i te waka
Ki te urunga, te waka
Ki te moenga, te waka
Ki te takotoranga i takoto ai te waka

Tōia mai ai ngā mātāwaka, ngā maunga whakahi me ngā awa whakaterē kōrero ki runga ki Te Wharekura o Te Kaokaoroa o Pātetere i te Rāmere kātahi anō ka hori. Nō roto tonu i te ope whakaeke ko ngā kura haka, ko ngā whānau maha, ko ngā Kōhanga Reo, ko ngā rūruhi me ngā koroheke me te Whare Kāhui Ariki e tautoko mai nei, e whakatinana mai nei i te karanga o te rā. I rere ngā waha karanga, i horu ngā reo hakahaka, i whakarere hoki ngā reo korokī me ngā reo korohi kia tau pai ai ngā manuwhiri ki roto ki te kaupapa o Ngā Whakataetae Kapa Haka ā-Rohe Kura Tuatahi o Tainui Waka. Ka mutu ana te taha tapu o ngā mahi, ka ruku ki te taha noa, ki te taha hākari. Ko te hākari ki te hua o te manaaki i te ata, ko te hākari ki te haka o Tāne Rore i te ahiahi, kua pūnaunau te whataroa o Manaia!

E mihi kau ana ki ngā ringa hora nui i tō tātou kaupapa nei, ki ngā kura huhua o te rohe nei, tatū ki ngā tamariki mō rātou tonu tēnei pōwhiri. Kia tere hoki te kārohirohi ki ngā kura, tatū ki te Whare Kāhui Ariki e tau nei, ka mihi rā!



Tainui Waka Primary School Kapa Haka Regionals

Five weeks of practicing, Five weeks of hard determination and Five weeks of a beautiful campaign. Our Kura Waenga Kapa Haka Team worked extremely hard to compete in the Tainui Waka Primary School Kapa Haka Competition that was held last week in Tokoroa at the South Waikato Sports and Events Centre. They had numerous after school practices and live-ins to perform a 25min bracket that was exceptional. All the tauri involved stepped up and made this campaign an enjoyable one for us all.

We placed 5th overall just missing out on one of the top 4 positions to represent Tainui Waka in next years' National Whakataetae in Nelson. We worked hard in this campaign and our tamariki left it all out on the stage. We could not have asked for anything more from them as they stood with pride for themselves, our kura, their whānau, their hapū and our iwi of Raukawa.

We will come back stronger and we will continue to hold our heads up high. To the whānau who assisted in this campaign, we applaud you and thank you for the awahi. Finally, we would like to wish the 4 Kura who will represent Tainui Waka next year the best of luck in your National Campaign.

Ngā mihi ngā Kaiako o Te Kura Waenga.



DANCING QUEEN: A TRIBUTE TO ABBA

On 17 November the Plaza Theatre presented *Dancing Queen: A Tribute To ABBA* a production that styled itself on the Swedish phenomenon who gained worldwide fame when they won the Eurovision Song Contest with *Waterloo* in the mid 70s.

The 'tribute' show genre is well established now as a way we can visually and musically reconnect with musicians who in some cases are no longer with us. Such shows are a means of 'staying alive' in the consciousness of those of us who may or may not have been privileged to experience the dinkum oil.

*ABBA*olutely *fABBA*ulous is certainly much more than a musical ABBA cover group. They feature very strong voices and harmonies that capture the essence of what many of us know from the numerous audio and video experiences of the original group out there today.

The theatre opened in darkness, and everybody screamed as *When I Kissed the Teacher* began with its intersection of maths and madness.

Blossoming, fading and lost love sentiments followed with *Name of the Game*, *SOS*, *Chiquitita* and *Knowing Me, Knowing You*.

Many were up dancing by this stage and seats shifted to create max leg room. Those that were still seated were chastised for not upstanding to join the moves of teaser *Dancing Queen* and its antithesis *Lay all Your Love on Me* which asks for commitment as opposed to "leave 'em burning and then you're gone..." and the complications of *Does Your Mother Know?*



Dancing to *A Tribute To ABBA* at the Plaza.

It was game on for the second half as the super trouper theatre light referenced song shone again on *ABBA*olutely *fABBA*ulous to reveal another costume change.



The Winner Takes it All...

Later the mood was more sombre with *Fernando* as two freedom fighters reminisce about a war they participated in when younger.

Strains of *The Pink Panther* heralded the ushering up of a gentleman from the audience to ease the lead ladies as they pleaded for a man after midnight to take them through their darkness. The bar was literally raised and lowered for this number as a mic and stand became a limbo prop.

And so the hits kept on coming until an enthusiastic audience demanded an encore that featured the strongest performance of the night with *The Winner Takes It All*.

Of course it doesn't necessarily follow that life situations have a win/lose conclusion and on the night we were all winners thanks to the performances of *ABBA*olutely *fABBA*ulous. Split Enz suggest that "history, never repeats" but the music of ABBA thankfully did on that Plaza night in Putaruru as the cast and audience thanked each other for the music.



ROTARY PUTARURU

We have finished the year with busy projects, our last one being 'The Rotary Putaruru/Putaruru Volunteer Fire Brigade Race Night 2020.'

This was a fantastic evening with a lot of eager cheering/disappointment as approximately 96 punters watched their horses race around the track, on the Plaza big screen.



Where was *Chewing Gum* sticking to the rails?

They placed their bets, made or lost money, had some laughs and ate some delicious supper (provided by the O'Rourke Family caterers).

A huge thanks from the organizers to the businesses that were so supportive in sponsoring the races (Waikato Real Estate; 07 Paint 4 Me; Graham Brown Accountancy; Go Fox Electrical; Morgan Spreading; Laser Plumbing; Laser Electrical; Cloud Based Accountants; Woodsy Engineering). To everyone else, whether buying horses or jockeys; sponsorship via donations of goods or money or coming along on the night, thank you very much.

The result was approximately \$3,240 going to both the Fire Brigade and Rotary Putaruru. "Putaruru has done it again."

Members have now completed the presentation of dictionaries to all year 4 students in our 7 contributing primary schools and we hope the students get many benefits over the coming years from these quality publications.



Pupils at Te Kura O Te Kaokaoroa O Patetere with their Rotary dictionaries.

We continue to recycle your old car batteries so as you are out with family and friends keep a look out for them.

We were out helping at the recent float parade before breaking for the summer, reconvening late January, early February. Rotary members meet twice a month - once for breakfast and once for dinner.

We welcome anyone - if you want to do good for your community - come and join us. Contact Judith 027 285 4915 or 07 883 5630.

FREE COMMUNITY ADVERTISING

A few important guideline regarding the adverts you supply to the Prattler for Service Clubs, Churches, Non-profit Organisations and the like. Please pass this information on to the appropriate person in your group.

The Prattler has an established standard size for Free Community Advertisements in order to share our paper space equitably and also facilitate uniform page layout options. Groups may have 1 free advert per Prattler issue. If you require more, then the usual advertising rates will apply.

Of course news from you club or organisation can be provided as a normal text and photographs item too - see more about this at <http://prideinputaruru.com/the-prattler-copy-suggestions/>

We urge all Prattler contributors to refer to this information link so that our production time is used efficiently.

Dimensions

The set size for free community adverts is Height 90mm by Width 130mm (A6 or 'postcard size' landscape). Please do not reverse these dimensions.

Because of time constraints, anything outside this sizing means that files may be returned for reprocessing.

Clip Art

Please avoid the use of clip art for copyright issues.

Publisher - the computer Software Program

Publisher is a stand alone program and is not cross-platform. Please use other options such as Word (or equivalent Open Source software).

We Can Edit and Design for You

If you supply the text we can design work for you. There will be a charge for this depending on the time involved. Please contact us, theprattler@prideinputaruru.com for a no obligation chat about this service.

An example of a Free Community advertisement is shown below.

If you have any questions about Community Advertising please contact the editor using the email link above.

STIHL SHOP PUTARURU

Love Your Land

Chainsaws

Lawnmowers

Line Trimmers

Ride-on-Mowers

Blowers/Vacs

Hedge Trimmers

Pumps

Water Blasters

Safety Gear

Gardening Tools

We Service all Makes and Models of Outdoor Power Equipment

STIHL SHOP™ Putaruru
15 Taupo Street, Putaruru
Ph: 07 883 8935
Email: putaruru@stihlshop.co.nz

Todd and Donna Dowd



www.stihlshop.co.nz

PUKETURUA HALL

Join us for this year's local

CHRISTMAS PARTY

EAT DRINK BE MERRY SEE SANTA

Friday 18 December

6:00pm start

Puketurua Hall and outdoor area

BBQ DINNER PROVIDED

BYO drinks, outdoor chairs, games

Family \$25 Adults \$7.50 Children under 15 \$5 Children under 3 Free
Pre-payment and RSVP needed by 13 December

Contact: Fiona 027 633 3467 or Judith 027 285 4915



TIRAU STREET SAFETY IMPROVEMENTS

The Tirau Street safety improvements have been taking place over recent weeks as most Putaruru residents are aware.

Work has been going on, weather permitting, for most days including some night time operations. Stop/Go traffic management and detours around the most affected area have been in place when necessary.

This has been a challenging time for local businesses and there have been media spots promoting the town as still open for business.

Early in the piece, Pride in Putaruru organised an open meeting with Waka Kotahi and as a result of this there was increased communication with the town about weekly action plans by the construction team.

The construction plan was published in the November Prattler.

Recently the last of the asphaltting work has been completed with a new light pole installed and kerb building at the various sites completed.

Clay pavers outside Countdown and at the pedestrian crossing by the roundabout have been laid along with tactile paving at all three sites. These provide a more attractive and more durable finish than concrete.

Line-marking is required to change from parallel parking to angle parking on the western side of Tirau Street. This will happen one evening under Stop/Go traffic management and will take a few hours.

As part of the improvements a new safety fence will be installed at the pedestrian crossing by the roundabout. To make sure it is durable this fence needs to be galvanised prior to painting, however the supplier is unable to complete this before Christmas.

For the safety of crossing users we will install the fence now and then return after the busy holiday period to remove the fence and galvanise it before reinstalling it.



Crossing outside the Foodcourt.



Crossing outside The Hog and Hounds.



Crossing outside Countdown.

CHRISTMAS PARADE AND GLENSHEA PARK MUSIC



The Cambridge Brass Band playing in Princes Street before and during the parade.



The Anderson Brothers perform at Glenshea Park.



Brett Bolt entertaining the audience at the park.



Physio Direct

Rural Physio at YOUR doorstep

For Appointments
Phone: 0800 55 55 123

For all your physiotherapy needs.

Helping you *Live, Work and Play* pain free!

- Sports Injuries
- Work place Injuries
- Muscle and Joint pain
- Surgical Rehabilitation
- Neck and Back Pain
- Neurological Rehabilitation

www.physiodirectnz.com
reception@physiodirectnz.com
 No GP referral needed!

SOUTH WAIKATO SENIORNET

South Waikato SeniorNet has wound up for the 2020 year but has a busy programme arranged for the start, of 2021. Courses begin in late January - see below.



If someone is interested in any of the classes listed it would be best to be in contact via email or by leaving a voice message on the SeniorNet phone or by ringing the after-hours number. Other computer training needs can usually be arranged too. Just enquire. Some of the 2021 courses scheduled are free.

As the year has neared its end SeniorNet has seen an increase in enquiries and membership, which has been very encouraging. SeniorNet only exists to help people with their tech needs and when its training services are no longer needed it will close down.

Because 2020 has been such a disjointed, difficult year for everyone the membership subscription for financial 2020 members has been rolled over until the end of 2021.

SeniorNet members should also note the members meetings each month. Come in for a coffee, a chat and a speaker.

The South Waikato SeniorNet Committee wishes members and all others a safe and pleasant Christmas and New Year. If Santa delivers you a new device of any sort and you are having trouble working it out we may be able to help you. Just be in touch.

SENIORNET COURSES FEBRUARY - MARCH 2021

Monday 25 January - 8 March (6 weeks) 1:00pm - 3:00pm	Photo Books Learn how to transfer your digital photos into a photo book, canvas prints or calendars. Bring your own USB stick with photos.	Cost \$30 Plus printing of your book
Monday 25 January 10:00am - 12:00 & repeated Tuesday 2 February 1:00pm - 3:00pm	Online Banking Learn how to navigate internet banking, pay your bills online and set up regular payments.	Free for Financial Members \$5.00 for Non-Members
Tuesday 9 February 1:00pm - 3:00pm	Online Shopping Learn how to order things like your groceries online & how to buy goods from local and national businesses like Van Dyks and The Warehouse.	Cost \$5.00
Saturday 13 February - 10 April (8 weeks) 10:30am - 1:00pm	Genealogy using DNA A class for beginner DNA Users. Supporting your research at all levels. Requirement: Must have had your DNA tested at Ancestry.	Cost \$60
Monday 15 February 1:00pm - 3:00pm	Using Medical Health Portals My Indici and Manage My Health.	Cost \$5.00
Tuesday 16 February - 23rd (2 weeks) 10:00am - 12:00pm	File Management What do you do with files and how do you find them again? Tutor: Terry Jackson	Cost \$10.00 Bring your own laptop or your files on a USB stick
Tuesday 16 February - 30 March (7 weeks) 1:00pm - 3:00pm	Genealogy This class is for people beginning their Genealogy journey, and is basic genealogy, creating a family tree and researching your family history. Tutor: Jillian Mihinui	Cost \$35
Monday 15 February - 29 March (7 weeks) 1:00pm - 3:00pm	Scrapbooking Learn how to create your beautiful memories in a creative way to share. Tutor: Raewyn Adams	Cost \$35 plus any course materials
Thursday 18 February 10:00am - 12:00pm 1:00pm - 3:00pm 18 March 10:00am - 12:00pm 1:00pm - 3:00pm	Monthly Members Meeting Using short-cuts on your computer Monthly Camera Club Living on a Pension/Benefit Monthly Camera Club	Free Cost \$2.00 Free Cost \$2.00

One on one lessons depending on your needs.

Email: putar@xtra.co.nz

After Hours phone 0274 764 607

Booking for all lessons and classes is essential - Payment in Advance Please.

2021 Annual Membership fee \$25 **COPYING, LAMINATING, BINDING AVAILABLE**

PUTARURU WATER AND FOOD FESTIVAL

Saturday 27 February 2021

This bigger and brighter day is being planned right now.

Community groups, Businesses and Families, mark this date in you 2021 calendar now!

WAOTU PUKETURUA GARDEN CIRCLE

With typical spring weather some of our last outings have included dodging the rain but when we needed it to be fine, it was!



Springtime in Tokoroa

September was spent in the Tokoroa area, visiting 2 large country gardens and a smaller town garden - all were excellent, although a bit early for many of the plant species to be in their full glory. Our lunch was at the Tokoroa Club - thank you to Joy and staff for the exceptional service and delicious food.

Due to Labour Day our October meeting was held a week early. Off to the Taupo area we went. The main garden visited was a very large one - some of us have been here before but it is still fabulous - well manicured and laid out with a surprise oversized trowel to wow us. We also visited a flower grower, after a few wrong turns - it was early days in the season to see the true flower beds but a passionate owner - a florist growing her own flowers. Our lunchtime was spent supporting businesses in the Huka Falls area.

In November we visited one large country garden in the Tatanui - Morrinsville area, this time with a gorgeous day. This garden was very extensive and including stunning rose beds, swimming pool area and views of the Kaimai's.

From here we travelled into Morrinsville visiting two very full, well maintained gardens full of interesting plants.



Jill Lloyd's garden in Acacia Bay, Taupo.

It is a great time to stay home and get our own gardens in order - you can be reaping the rewards of those early planted veg plots or get into planting them like some of us. The regular rain is beneficial for our gardens at least.

Our year finishes with our Christmas Luncheon at the Putaruru Bowling Club on Monday 14 December. We welcome new members to join us. Phone Steph 07 883 7565 for more information, but our first gathering for the new year will be on Monday 22 February when we plan to be doing local garden visits.



Kay Humphries Travel

Where Passion and Expertise Combine



Support your locally owned and operated travel agent.

Mobile: +64 21 070 1001

Phone: +64 7 883 7368

Email: kay@khtravel.co.nz

Web: www.kayhumphriestravel.co.nz

Kay Humphries

Travel Manager & Cruise Specialist

DECK THE HALLS

The St Mary's School Hall was again the scene of the spectacular "Deck the Halls" display recently that celebrated the spirit of Christmas.

There was an opportunity to compose a Christmas message for the tree, have a chat with Santa, enjoy the live Nativity presentation and of course admire and appreciate all the painstaking work that had gone into decorating the Kensington Street school hall.

Here are a few images taken at this event by The Prattler.



The Nativity presentation at Deck the Halls.



WAIKATO RIVER TRAILS

Waikato River Trails Trust are excited to again hold the Summer Sizzler event on Saturday 9 January 2021. For more details check out www.wrtsummersizzler.com

The Summer Sizzler is one of the first events of the new year, for many the first and best chance in 2021 to fully dust off the shoes for a stroll or dash along the beautiful Waikato River Trails.

The family friendly event has three distances 6km, 11km and 22km. All distances can be run or walked - the 11 and 6km are 100% off road with the 22km crossing the Whakamaru Dam. The event finish is at the awesome Mangakino Lake-front reserve.

The courses are fun, the scenery is epic and the finish area provides the perfect setting for a post event picnic. There are plenty of food vendors on site with a variety of delicious options.

Every participant whether they be 5 or 85 gets a race number, a finishers medal and complimentary event photos. There are also a great number of spot prizes thanks to generous donations from businesses.

The event is all about bringing people together, celebrating the Mighty Waikato River and kick starting the new year.

Please come and enjoy this local event with your family and friends on your Waikato River Trails.

For all event information and to enter, www.wrtsummersizzler.com

Your entry fee helps with maintenance of the Waikato River Trails.



Waikato River Trails SIZZLER

9TH JANUARY 2021

22KM - 11KM - 6KM

FUN RUN/WALK EVENT







ENTER NOW AT

WWW.WRTSUMMERSIZZLER.COM

GIRL GUIDES REGIONAL AWARDS DAY

On 8 November 2020 the Girl Guides had their regional awards day at Putaruru College. This day is to celebrate all the girls who have achieved their highest awards in their units over the year and also awards leaders have achieved. Our region extends from Te Kauwhata in the north and across the Hauraki plains, down to Taumarunui in the south, taking in Hamilton, Morrinsville, Cambridge, Te Pahu, Te Awamutu, Matamata, Putaruru and Tokoroa, and then extends out to take in Reporoa and Taupo.

From the local south Waikato team there were many girls and leaders who received recognition for their achievements over the year as well as awards that leaders gained. First the girls were acknowledged with a small gift.

Pippins who achieved their highest badge, the **Gold Apple** in 2020.

Tokoroa Pippins: Shaydin-Anne Mana, Sharon Iva

Putaruru Pippins: Elizabeth Stratton, Jaylee Richmond, Mila Richmond

Guides who achieved their highest badge **The Aoraki Award** in 2020.

Putaruru Guides: Rebecca Coop, Lily Fulford

Rangers who achieved their highest award in Girl Guiding, this is **Queens Guide** in 2020.

Putaruru Rangers: Nikita Akkersma, Katie Wood

Following the girls being recognised for their awards, the event then moved onto recognise leaders service bars.

5 year Bar:

Samantha Tomalin (Putaruru Brownies)

10 year Bar:

Celeste van Dam (Putaruru Rangers)

20 year Bar:

Jan Tomalin (Putaruru Pippins and Brownies)

45 Year Service Bar:

Heather Kinloch

She was surprised by this presentation as she was on the planning committee and her husband came forward to present this bar.

After the service bars we then moved on to the leadership regional awards.



Heather: Recognised for 45 years service to Girl Guides.

The First Award is the **Te Ara Award**. This award Te Ara is the path. Recipients of the Te Ara are on the path to being an effective leader. This was awarded to **Glenda Bomford** (Tokoroa Guides).

Following this award is **Te Kaiarahi**, this award Kaiarahi is the pathfinder. Recipients of Te Kaiarahi will be providing appropriate help and support to others on their guiding way. This was awarded to **Samantha Tomalin**.

The final Regional badge is the **Arataki**. Arataki is to guide and to lead. Recipients of the Arataki are recognised for their leadership skills and their strong support for their Guiding communities. They have taken on additional responsibilities and/or consistently providing quality leadership over an extended period of time. It is the highest award that a region can award. This was awarded to **Jan Tomalin** (Putaruru Pippins and Brownies).

After the regional awards were presented, it was time to move onto the National awards. These awards are recommended to National award committee in which they make the final decision.

This year South Waikato had one recipient of a National Award, this was for the National Award of the **Fern**. The Fern is a symbol of New Zealand and worn with pride by our leading sports people. Recipients of the Fern are high achievers. The Fern is given to an enrolled leader who has provided exceptional service to Guiding. Exceptional service includes taking on additional responsibilities and/or consistently providing quality leadership over a lengthy period of time.



Pauline Received the national award called the Fern.

This leader was **Pauline Gill**, (Putaruru Rangers). The award was a complete surprise to Pauline and she was joined on stage by her family and close friends to share in this moment.

The girls then spent the afternoon in the sun (and a patch of heavy rain) enjoying some water games and water slides with girls from around the region.

The day was a great way to recognise and acknowledge our girls and leaders' hard work. If you would like to join one of our units or join us as a leader in any of the towns in our team please feel free to email our Local Co-Ordinator Michelle Gillard at michellgirlguide@gmail.com

THE 2020 ARMISTICE/REMEMBRANCE DAY CELEBRATION

Putaruru District Returned & Services Association (Inc.)

Wednesday 11 November at 11am the Putaruru RSA and public assembled at the top lawn of the Garden of Memories to commemorate Armistice Day which is celebrated every year to mark the end of the First World War which finally ended with the signing of an armistice between Germany and the Allies on November 1918. On the 11th hour of the 11th day of the 11th month, the guns fell silent.



The ceremony consisted of a welcome, prayer and reading by Markus Schonberger, an address by councillor Gary Petley, wreath laying, lowering of the flag to half-mast, the Last Post, Ode, a moment of silence and The Rouse, Raising the flag, then the Reveille. The bugler for the Putaruru RSA Armistice/Remembrance Day celebration was Memory Brooke.



Gary Petley giving his address - Markus Schonberger standing behind. Bugler Memory Brooke (below).

Cadets took their post at the memorial and flag pole throughout the proceedings and Fire Brigade representatives also stood on guard.

Members of the public quietly paid their respects after the ceremony.



PUTARURU TOY LIBRARY

2020 has proven to be a very successful year for the Toy Library! We have seen some new members, successful fundraising and are proud of the effort we have made to increase - even throughout a global pandemic!



The 7th annual night market was hugely successful and we wish to thank our local community for supporting us once again and turning up in droves to the Timber Museum for a fun family night out.



All photos on this page are from the Putaruru Toy Library Night Market.

A massive thank you to our stall holders who also took a leap of faith with a new venue - we hope you all enjoyed yourselves.

We would like to put out an extra special thank you to these amazing sponsors who donated vouchers and resources for the night. We are so lucky to have fantastic community support.

Qubik Farmsource Countdown Putaruru Buckland Street Childcare
Colleen and the team @ Putaruru Timber Museum for hosting us
Brett Bolt - our fantastic musician
Jenny - for her amazing candy floss donation to the Toy Library

And of course, Santa himself who was able to join us on the day. We are grateful he made the big trip! Our last opening day for 2020 was Friday 11 December - have a great holiday break everyone. Play is the way.



Electrical
Laser
"Totally Dependable"

Authorised Installer of

MITSUBISHI ELECTRIC



Laser Electrical Putaruru
Your complete local electrical professionals

Residential | Agricultural
Maintenance & Servicing
Air Conditioning

07 883 7677

putaruru@laserelectrical.co.nz
www.laserelectrical.co.nz

CELEBRATED CARE FACILITY TURNS TEN

An award-winning South Waikato facility that caters for people with dementia, is about to celebrate a significant birthday.

Fern Haven, which is part of Putaruru's Rangiora Village, came into being in early December 10 years ago, after a massive community fundraising effort.

Since then the 16-bedroom facility has won both national and international awards in recognition of how it caters for older people living with dementia and requiring secure support.



Rangiora's Fern Haven carers Tracey Hemming (left) and Iris Emperado, explain the significance of Fern Haven's 10th anniversary to one of the residents.

Rangiora general manager Jeff Bennett says ten years is a milestone of note as in that time the much-applauded Fern Haven has offered a safe and special place for many within its household model of care. It has also provided piece of mind for hundreds of family members.

Fern Haven is based on a model of care that offers non-institutional elder care environments aimed at empowering the lives of those who live and work in them. It can cater

for 19 residents as three of the rooms are double, offering the opportunity for partners to share should they wish to.

Rangiora patron Gaye Lamb recalls being part of the fundraising team that worked tirelessly to raise \$850,000 toward the Fern Haven build. No stone was left unturned and the community support was incredible.

"Fern Haven was the result of the effort of a passionate community. The build of the whole of Rangiora is a community effort and asset and this must never be overlooked or forgotten," she says.

Rangiora also includes a resthome and retirement village living. The latter is part of an expansion project, which will see the addition of 21 more two and three bedroom villas.

SOUTH WAIKATO RETIREMENT VILLAGE TO GROW

Opportunities are growing for those seeking retirement village living in the South Waikato, thanks to an expansion plan at Rangiora.

On-site work has started on a staged project that will see 21 more two-and-three-bedroom villas built as part of Putaruru's popular Rangiora Retirement Village. The villas offer independent living with a reduced burden of maintenance.

The three-stage development in Scotia Glen Street Putaruru will border the existing Matai Crescent village, and will feature villas constructed by Heartland Homes.

The foundations have just been poured for a Heartland Homes show home that is expected to be ready by early March. Rangiora general manager Jeff Bennett says community support and a constant Rangiora Retirement Village waiting list that sits at about 20, indicate interest will be high. Expressions of interest in the first seven of the villas are already being taken and can be lodged here.

"The development is a response to growing demand for aged residential care in the South Waikato. If you look at census data, we are starting to see a bow wave of elderly within the district. For many years we have maintained a waiting list for the existing Rangiora Retirement Village villas. What we are doing now is future proofing and is a direct response to local need and demand. Our board comprises local business people who are mindful of being here to provide for our community. "It is great for people to have aged care available in the community they have lived in. Rangiora is for the community and grown from the community," Jeff says, referencing major fundraising efforts involved in its establishment.



General manager Jeff Bennett with villa salesperson Nicole Tidmarsh at the Scotia Glen Street site.

be \$425,000. The three-bedroom villas will span about 172m², also include two bathrooms, and feature double garaging. These bigger villas are expected to be priced at \$455,000.

Jeff says while Putaruru has noticed a slight increase in the price of housing of late, that growth has not been significant.

Two sets of plans have been developed for the villas that will be clad in brick and topped with colour steel roofing. Their exact configuration in terms of numbers of bedrooms will be determined by public demand, Jeff informs.

The two-bedroom villas will span about 148m², will include two bathrooms, 1.5 car garaging and the expected cost will

CHRISTMAS PARADE CLASSICS



SEEN AT THE CHRISTMAS PARADE



Putaruru Primary.



#883tamariki.



St Marys Catholic School.



Abbeys Place Childcare.



Go Fox Electrical & Plumbing.



Honda Shop.



Putaruru St John Youth.



Downer NZ.

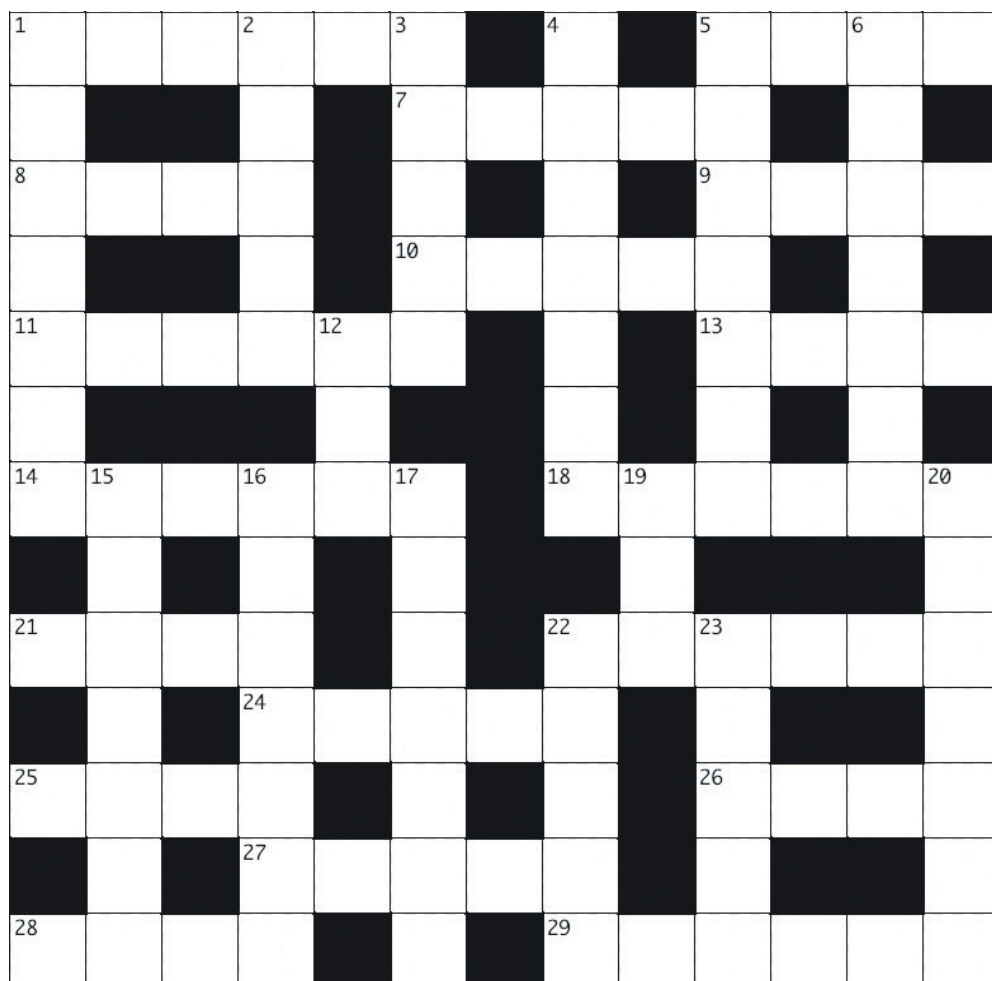


Great with numbers.
Even better with people.



**GRAHAM
BROWN & CO**
CHARTERED ACCOUNTANTS

PRATTLER CROSSWORD



Across Clues:

1. a sudden whim (7)
4. any formal or authoritative command (5)
7. an area for preparing and cooking food (7)
8. a roughly built hut (5)
9. to cause or bring about (6)
12. things which are of the same colour or design (8)
15. deterioration of memory and intellectual ability (8)
17. an alloy for joining two metal surfaces (6)
18. a recurrent rhythmic series of beats (5)
21. a person who engages in an activity as a pastime rather than professionally (7)
22. to rest or support oneself on one's knees (5)
23. a level of command, responsibility (7)

Down Clues:

1. sloping or slanting (8)
2. the only one of a particular type (6)
3. the reflection of sound (4)
4. an immeasurably long period of time (4)
5. incapacitated or disabled by injury or sickness (7)
6. a sharp pointed projection (4)
10. without inhabitants, vacant or unoccupied (5)
11. a collection of maps (5)
13. one who looks after, protects, or defends (8)
14. to ask earnestly or piteously (7)
16. to refer indirectly, briefly, or implicitly (6)
18. a small disc of hard rubber (4)
19. a British nobleman ranking above a viscount and below a marquess (4)
20. an object, person, or act that is not genuine (4)

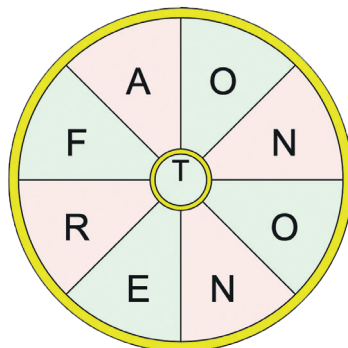
WORD WHEEL

The aim is to create as many words as possible with the letters in the word wheel.

You can only use each letter once when making a word and every word must have the letter in the centre of the wheel. For example, **foot**.

Can you find a 9 letter word too?

Record your word wheel finds [here...](#)

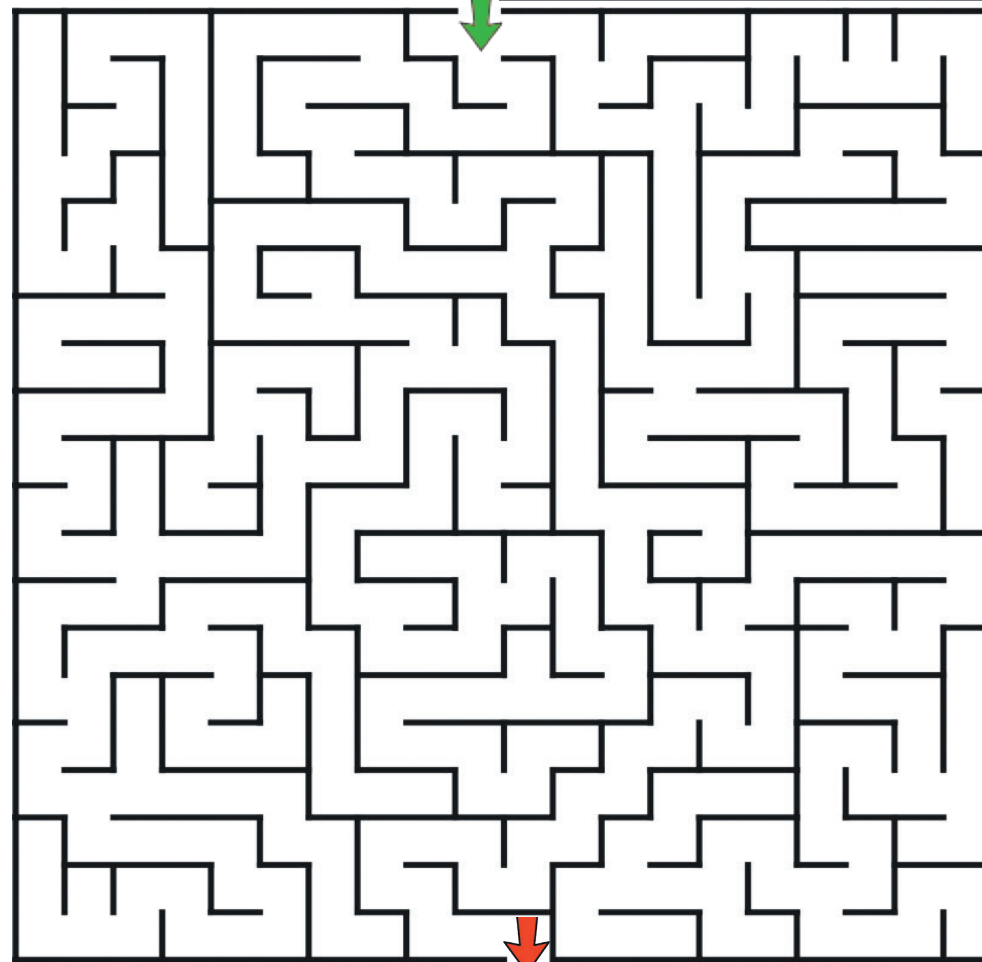


SUDOKU PUZZLE



	7		5			6		9
			7	4	6	8		
4				8				
	4							
5						4	3	7
7	9						1	
	6		9	5				
			8					5
				7				1

PRATTLER MAZE



FIND THE 10'S

Find connecting numbers, horizontally, vertically or diagonally, that make a sum of 10.

The connected numbers must be in a straight line.

Some numbers may be used more than once when forming different solutions.

Three starter finds are indicated in the puzzle.

7	7	4	5	4	6	6	4	9
8	1	7	7	5	1	8	5	7
8	4	5	7	5	2	1	4	4
1	1	5	9	2	1	5	1	5
1	8	3	9	3	5	1	2	3
7	9	3	4	9	3	8	4	6
5	5	4	4	2	3	2	6	7
3	1	2	4	4	1	4	3	7
1	3	7	4	8	5	6	8	2



SOUTH WAIKATO DENTAL SURGERY

Have a Safe and Happy Holiday

We are open during the holiday period on
29 Dec 30 Dec 31 Dec and normal hours from 5 Jan
42 Tirau Street, Putaruru
07 883 8727 0800 466 930 www.ruraldental.co.nz

PUTARURU TYRES

Matt Corrin
DIRECTOR

021 190 1976

Find us on:
facebook.

103 Tirau Street
PO Box 303
Putaruru 3443

24/hrs Ph **07 883 7496**
putarurutyres@live.com

SeniorNet

Dust off your Computer!
We have lots of fun things
you can do using it...

Phone: 07 883 3151

Email: putar@xtra.co.nz

Facebook: South Waikato SeniorNet

3 Duke Street, Putaruru (above Unichem)

QUICK QUIZ

1. This scene is from what classic film?



Spartacus

Ben Hur

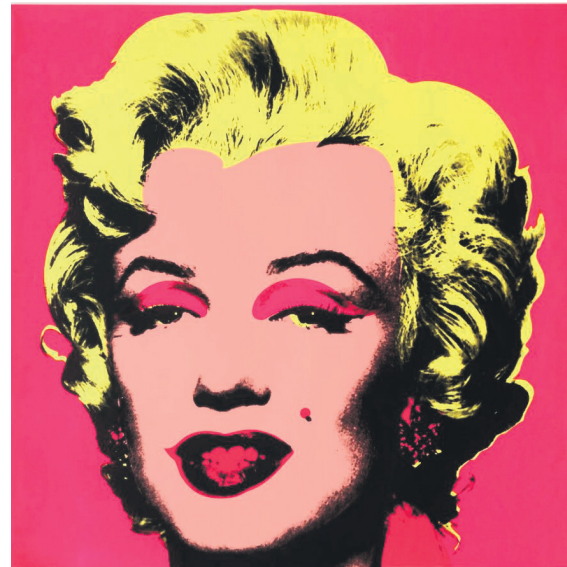
Julius Caesar

SPOT THE DIFFERENCES

Can you spot the 6 changes that have been made to this scene in the bottom version?



2. This painting is by?



Edward Hopper

Edvard Munch

Andy Warhol

3. These lines were written by?

When Tom and Elizabeth took the farm
The bracken made their bed
and Quardle oodle ardle wardle doodle
The magpies said

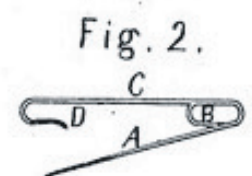
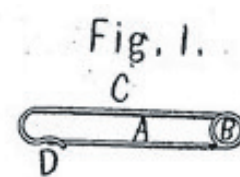
Tom's hand was strong to the plough
and Elizabeth's lips were red
and Quardle oodle ardle wardle doodle
The magpies said

Tom Scott

Denis Glover

Janet Frame

4. The name associated with this invention is?



Walter Hunt

Thomas Edison

Alan Turing

5. Word Meanings

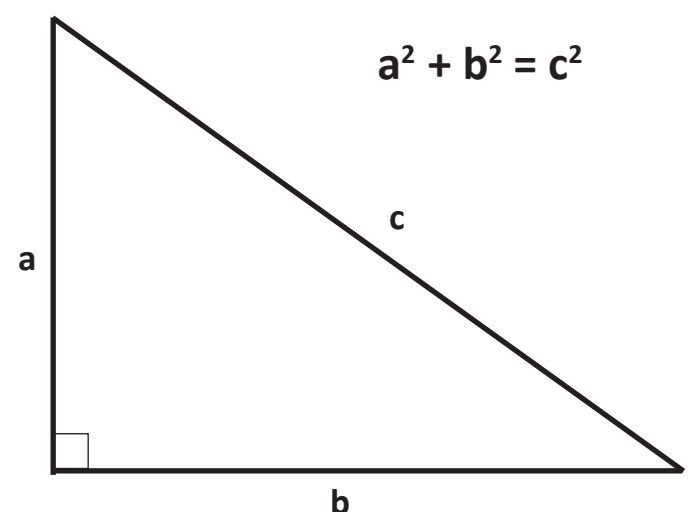
Which one of these words means, *wasting time*?

timorous

sloth

dilatory

6. This diagram is used in the explanation of whose theorem?



Archimedes

Euclid

Pythagoras



Digital Transfer of Slides. Photos, Audio Tapes, 8mm Movies. VHS Tapes and Photo Negatives to modern digital format – also Photo Restoration.

Our results have been great but investment in even higher pro-level technology allows us to set even higher standards.

We have happy clients from all over NZ.

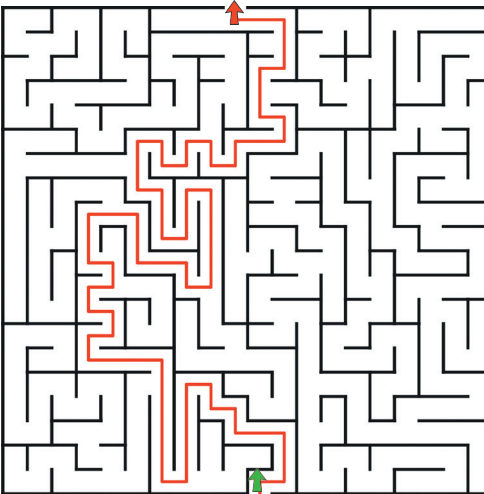


DIGITAL TRANSFERS, Phone Mike 0274 80 30 88 3 Junction Street – Putaruru

ANSWERS to the original puzzles from pages 28 - 29 of this Prattler

1	6	9	4	7	3	5	8	2
5	2	7	1	6	8	4	3	9
4	8	3	2	5	9	7	6	1
6	1	2	5	3	4	8	9	7
7	3	4	8	9	6	2	1	5
8	9	5	7	2	1	3	4	6
3	7	1	9	8	2	6	5	4
2	5	8	6	7	4	9	1	3
9	4	6	3	1	5	7	2	8

N	O	L	E	C	H	E	L	E	N	K
A	D	K	R	R	R	R	R	R	R	C
I	R	A	M	A	M	A	M	A	M	U
D	L	S	E	T	S	E	T	S	E	P
R	E	S	O	L	D	E	R	E	R	D
A	A	I	A	T	I	A	T	I	A	D
U	D	L	P	I	P	I	P	I	P	E
G	I	N	G	I	N	G	I	N	G	N
L	A	C	E	C	E	C	E	C	E	L
K	S	H	A	C	K	S	H	A	C	K
S	V	N	C	H	E	N	C	H	E	N
C	O	N	C	O	N	C	O	N	C	N
T	C	I	S	E	T	C	I	S	E	T



1	3	7	4	8	5	6	8	2
3	1	2	4	4	1	4	3	7
5	5	4	4	2	3	2	6	7
7	9	3	4	9	3	8	4	6
1	8	3	9	3	5	1	2	3
1	1	5	9	2	1	5	1	5
8	4	5	7	5	2	1	4	4
8	1	7	7	5	1	8	5	7
7	7	4	5	4	6	4	6	9



SPOT THE DIFFERENCE

1. car added
2. FIRE ERIF replaced
3. Denis Glover
4. Walter Hunt
5. dilatory
6. Pythagoras

These original puzzles are the copyright of the Prattler editor.

WORD WHEEL: SOME POSSIBILITIES

off	ante	note	toea	front	trona
oat	tor	nota	tern	forte	trefa
not	too	neat	tear	fetor	tonne
net	ton	fret	taro	atone	toner
fat	toe	frat	tarn	anent	tenor
eat	ten	fort	tare	after	tenon
ate	tea	foot	rote	afoot	tenno
art	tar	font	rent	toro	orate
ant	tao	feta	reft	torn	natron
aft	tan	feat	rate	tore	oater
to	rot	fate	rant	tora	oaten
ta	ret	fart	raft	toon	noter
at	rat	etna	onto	tone	nonet

QUICK QUIZ

HOW WELL DO YOU KNOW THE AREA?

Where in our region would you find this scene located?



The scene from our November issue was the Entry Code Box outside St John in Overdale Street. Congratulations to those who identified this. To make a suggestion about a mystery object, simply email, the Prattler.



READERS SUGGEST A CAPTION: DECEMBER

Because our focus is always local, these photographs will be from our area. Captions should be family friendly! Suggestions received for the NOVEMBER photo were:



- no mean feet
- shoo off
- swinging soles
- hanging by a thread
- rafters
- a likely pair
- hanging canvas
- walk on high
- trip up
- interlaced
- climb new heights
- beam me up

Below is our DECEMBER suggest a caption photo. Simply email you suggestions to theprattler@prideinputaruru.com and we will share them in the next issue.



Suggest a caption for this picture.

PRESENTATIONS TO RSA MEMBERS

Life Membership Presentations were recently made to RSA members Murray Bath and Dora Davies at a function held at The Cook, Putaruru.



Dora Davies, Murray Bath and Terry Findlay.

Dora Davies

Executive Committee Rotorua RSA 15 years
Secretary Putaruru CWI 15 years
Secretary Putaruru 50+ Club 8 years
Red Cross and Meals on Wheels 15 years

Murray Bath

1961- 63 cadet in the ATC7 squadron Hamilton
2008 joined Air Training Association of New Zealand committee of 3 Squadron South Waikato
2010 became chairperson 34 Squadron
2014 became chairperson Thames Valley, Waikato ATCA NZ a position still held
2014 joined Red Cross as hospital driver and meals on wheels driver - still active
2015 became patron of 34 Squadron South Waikato also made district RSA cadets rep



Murray Bath and Dora Davies with their RSA Life Membership awards.



RSA members at the recent 2020 Armistice/Remembrance day celebrations.

ADVERTISERS WHO SUPPORTED THE DECEMBER PRATTLE

Please support these businesses. The Prattler very much appreciates their advertising. Without them there would be no Prattler.

Abbey's Place	10
Bible Baptist Church	4
Digital Transfers	34
First Klass Pest Solutions Ltd	15
Graham Brown & Co	32
LJ HOOKER	17
Kay Humphries Travel	26
Laser Electrical	29
Laser Plumbing	19
Le Pine & Co	5
Lunn Builders Ltd	6
Moos Baas & Oinks	11
Nicholson Surveying Ltd	7
Owlets Early Learning Centre	13
Physio Direct	25
Plaza Theatre	8
Putaruru Electrical	22
Putaruru Tyres	33
Rangiura	22
South Waikato Dental Surgery	33

Spargo Plumbing	7
STIHL Shop Putaruru	24
Stuart Edmeades - Silver Fern Farms	7
Tirau Earthmovers Ltd	15
Tirau Panelbeaters	12
Van Dyks	1 & 3
Waikato Real Estate Ltd	14
Waikato River Trails	27
Woodsy Engineering	4

PUTARURU WATER AND FOOD FESTIVAL

Saturday 27 February 2021

This bigger and brighter day
is being planned right now.

Community groups, Businesses and Families,
mark this date in you 2021 calendar now!

PRATTLE MARCH 2021 PUBLICATION DEADLINE

5:00pm **Friday 19 February** for the **3 March** issue. Mark this in your diary now!

EMAIL: manager@prideinputaruru.com
PO BOX 155 PUTARURU 3443
PHONE: 07 883 7272
FAX: 07 883 7272

On-line Daily Blog: theprattler.org.nz
PiP Website: prideinputaruru.com
Media Editor: theprattler@prideinputaruru.com
PiP TV Channel accessed from the Daily Blog and/or PiP website

Views expressed in *The Prattler* are not necessarily those of *Pride in Putaruru*.

PRIDE IN PUTARURU ASSOCIATION

Raewyn Whiteman-Thorne: Chairperson (@Junction Services)
Linda Galbraith: Secretary (The Plaza)
Murray Deas: Treasurer (Unichem Putaruru)
Tim Bayley: (Nicholson Surveying Limited)
Kimberley Crocker: (Graham Brown & Co)
Leanne Field: (Community)
Teri-Anne Petley-Rata: (Community/Youth)
Mike Tucker-Strachan: (Bella Pane)
Sandra Wallace: (SWDC Representative)



The 2021 Putaruru Water and Food Festival

**Saturday 27th February
Glenshea Park**

10am - 2:30pm



**Anyone interested in a stall
or exhibiting, please contact
Pride in Putaruru**

Phone: 07 883 7272

Email: manager@prideinputaruru.com